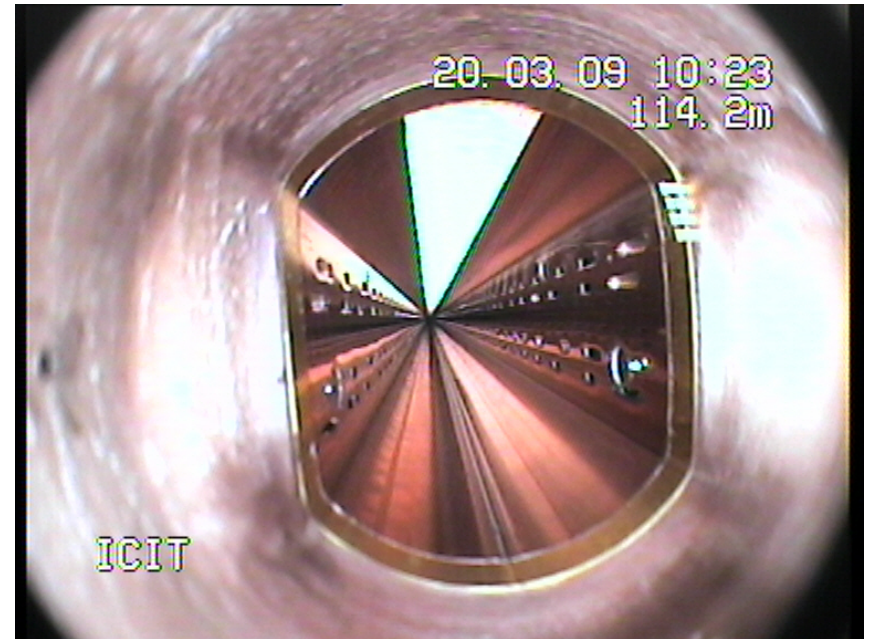
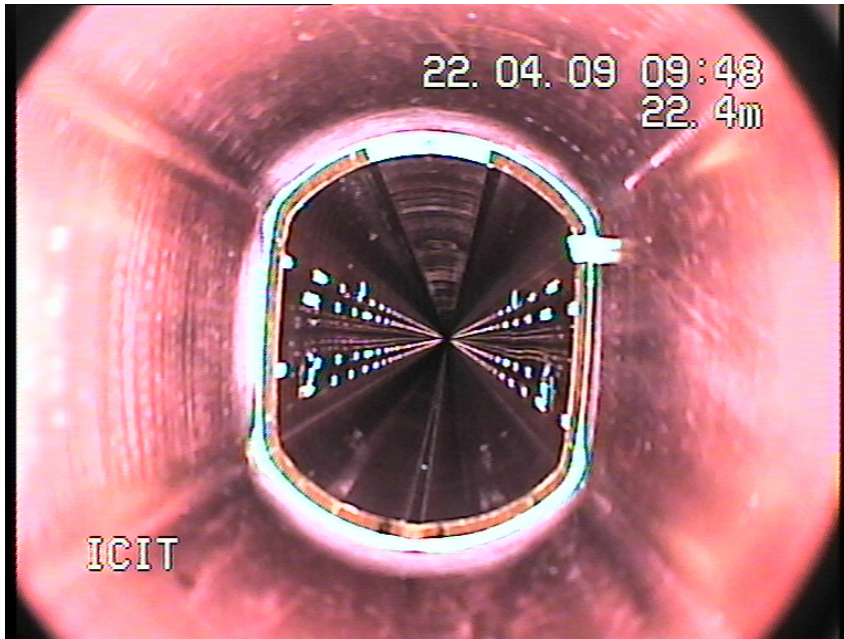


Recent NCs in sector 6-7

Q29.R6 (MQ-MB interconnect): two rf-fingers protruding inside the beam screen (3-4 mm)

MBB34.R6 (MB-MB interconnect): four rf-fingers protruding inside the beam screen (2 mm).



According to experts both NCs are not due to buckling of the rf-fingers during warm up of the sector.