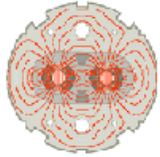


IR8 Triplet Allocation

- *Geometry considerations (→ JBJ):*
LQXA01/04 & LQXB04/05 IR8
left or right
- *Q3 (LQXAC03) locked to IR8 left*
- *Q3 right no candidate yet → any
choice of rest of 8*

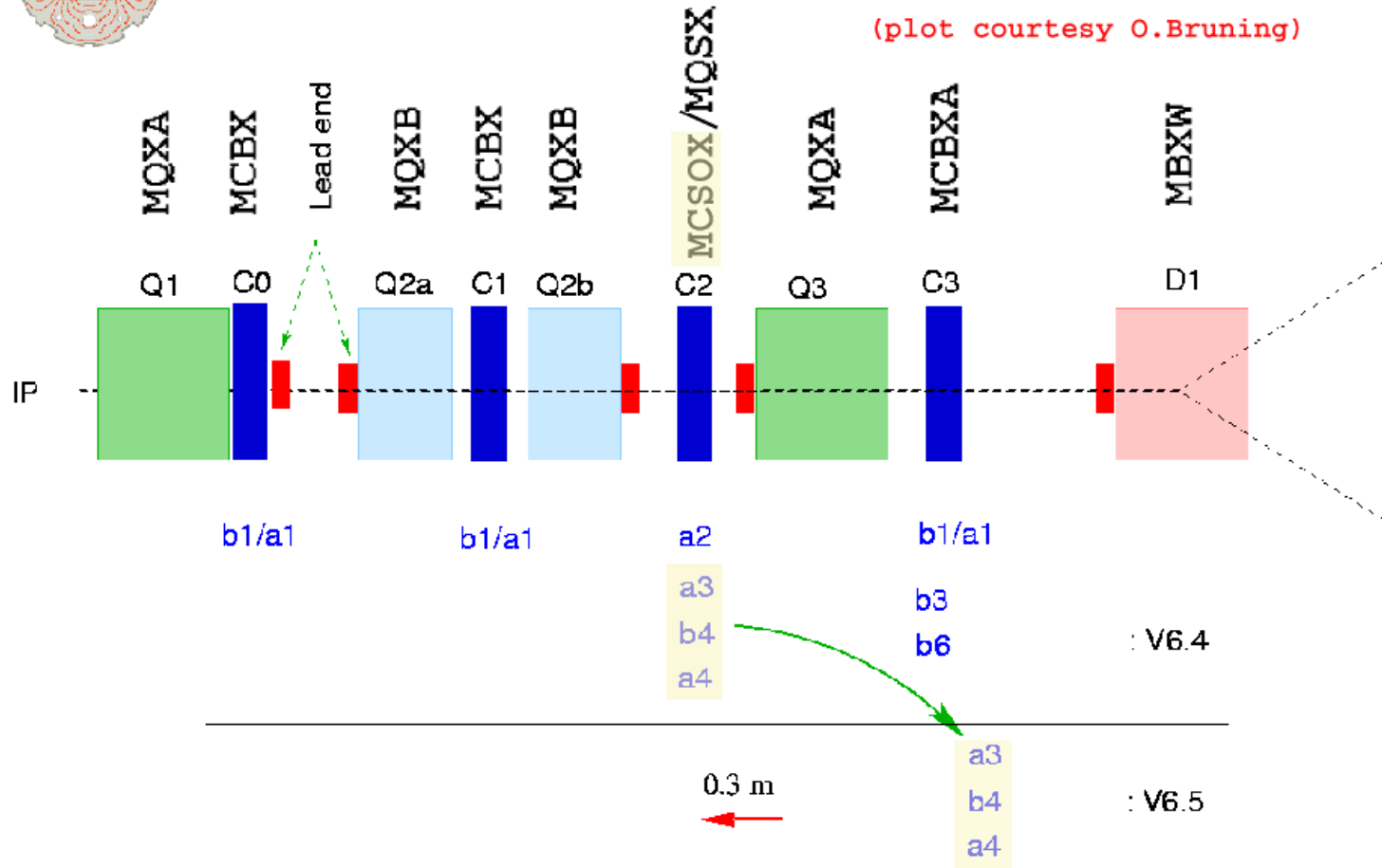
IDCards Coloring & Magnet Sorting Criteria

- *Collision: tracking with error table 0210 guarantees sufficiently large DA*
- *Injection: measured triplet errors lead to noticeable reduction of DA (→MG)*
- *IDCards Color Code finalized for **LQXA01/02/04, LQXB03/04/05 & LQXC03***
- *However, new Q2 measurements will change criteria for future Q2*
- *Sorting done with errors at injection*



Triplet Corrector Layout

(plot courtesy O. Bruning)



LTC-03.03.2004

Frank Schmidt AB-ABP-LOC

MEB 89

July 19, 2005

Techniques

- *Milestone: Measured errors of individual magnets can now be introduced in newest MAD-X sample job to overwrite error table (→ TR)*
- *Errors and sign convention checked for all quadrupoles in IP8 checked → perfect!*
- *Semi-automatic routine prepared to produce IDCard color coding*
- *Script prepared for running MAD-X for all Q1/2/3 permutations → optimize triplet correction*

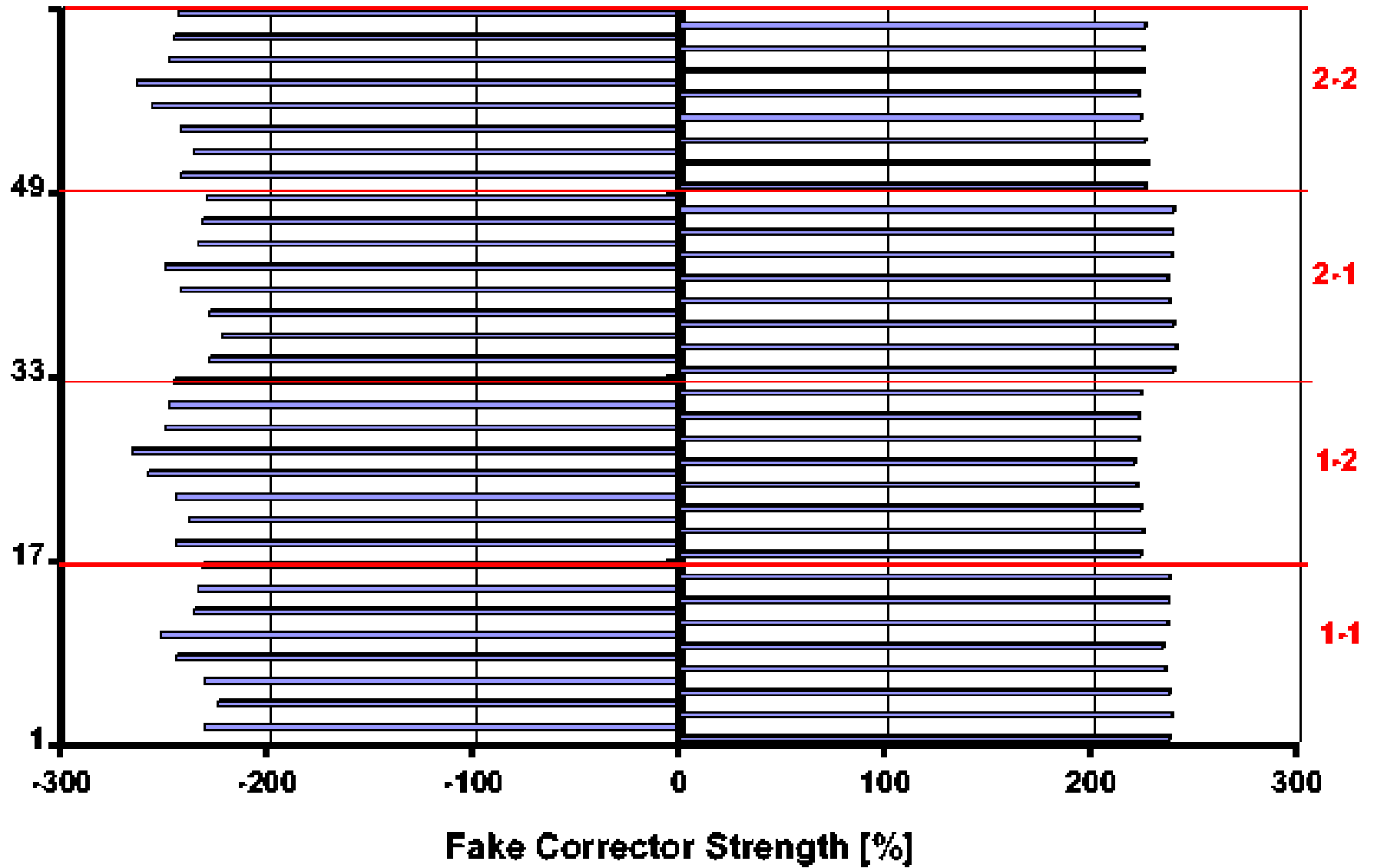
Results

- *No dramatic preference found for sorting*
- *Slight advantage for:
LQXA01/LQXB04 left &
LQXA04/LQXB05 right*
- *Tools ready for quick sorting on arrival of new data*

Injection IR8 b6 Correction

July 19, 2005

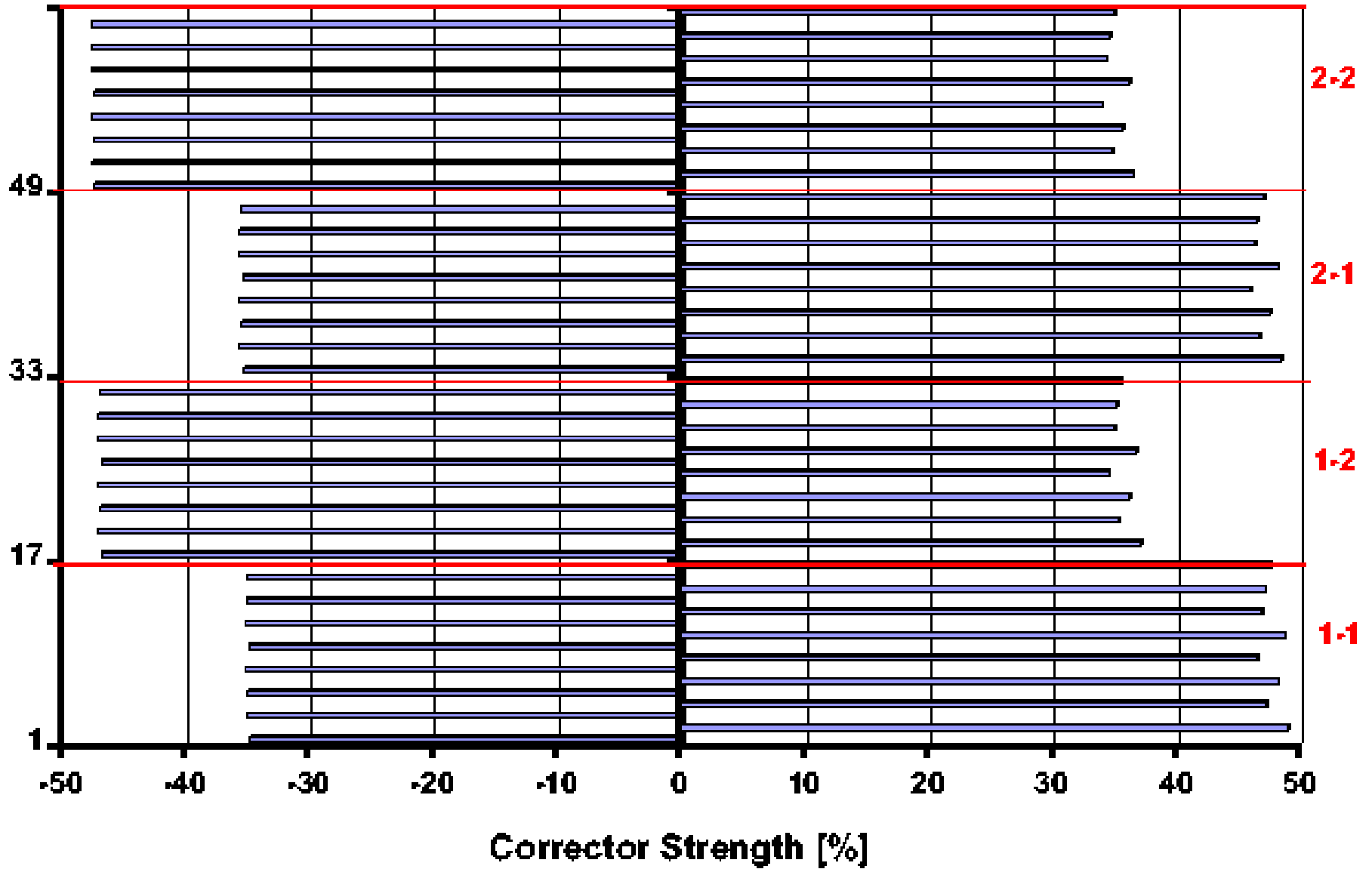
MEB 89



Collision IR8 b6 Correction

July 19, 2005

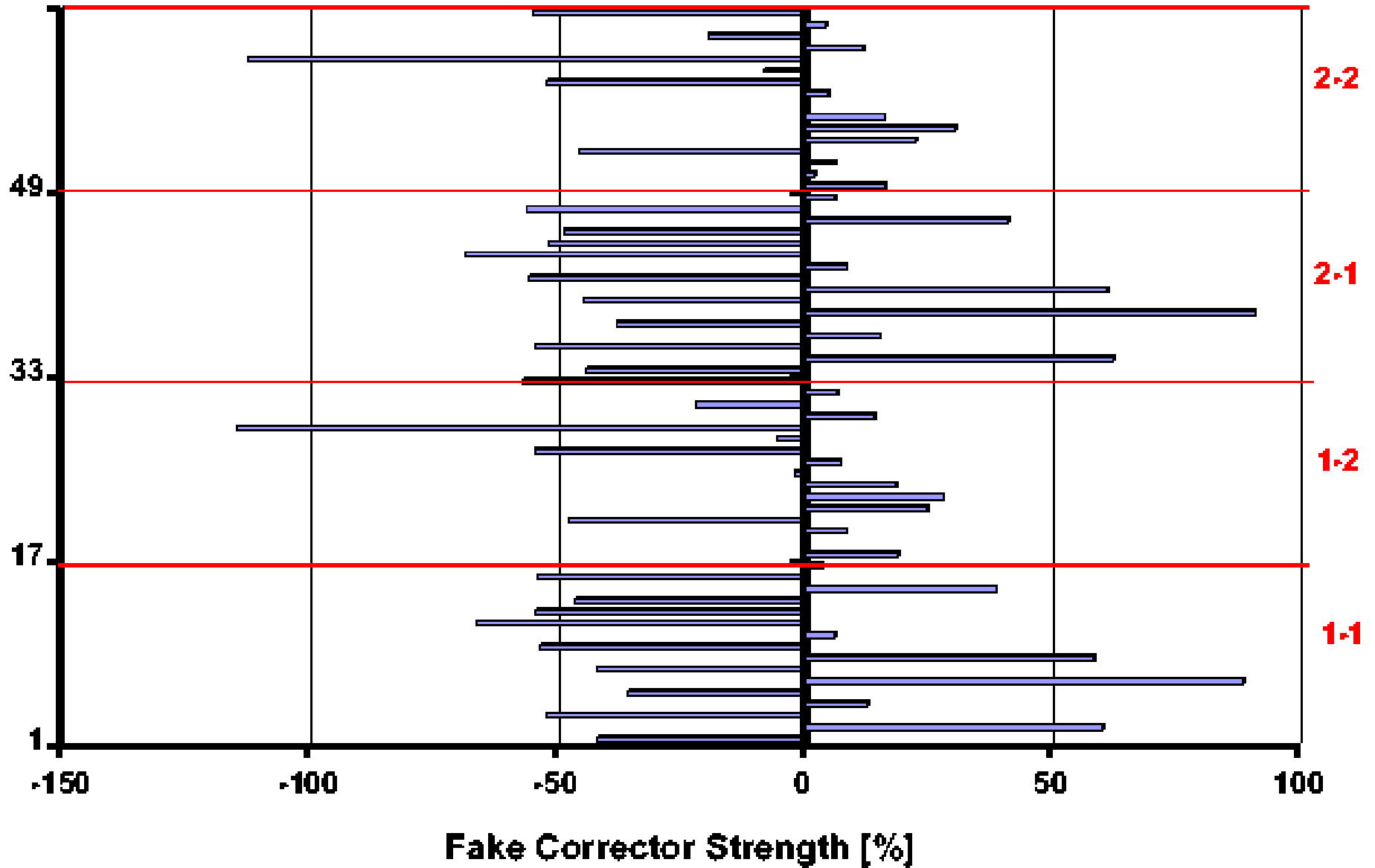
MEB 89



Injection IR8 a4 Correction

July 19, 2005

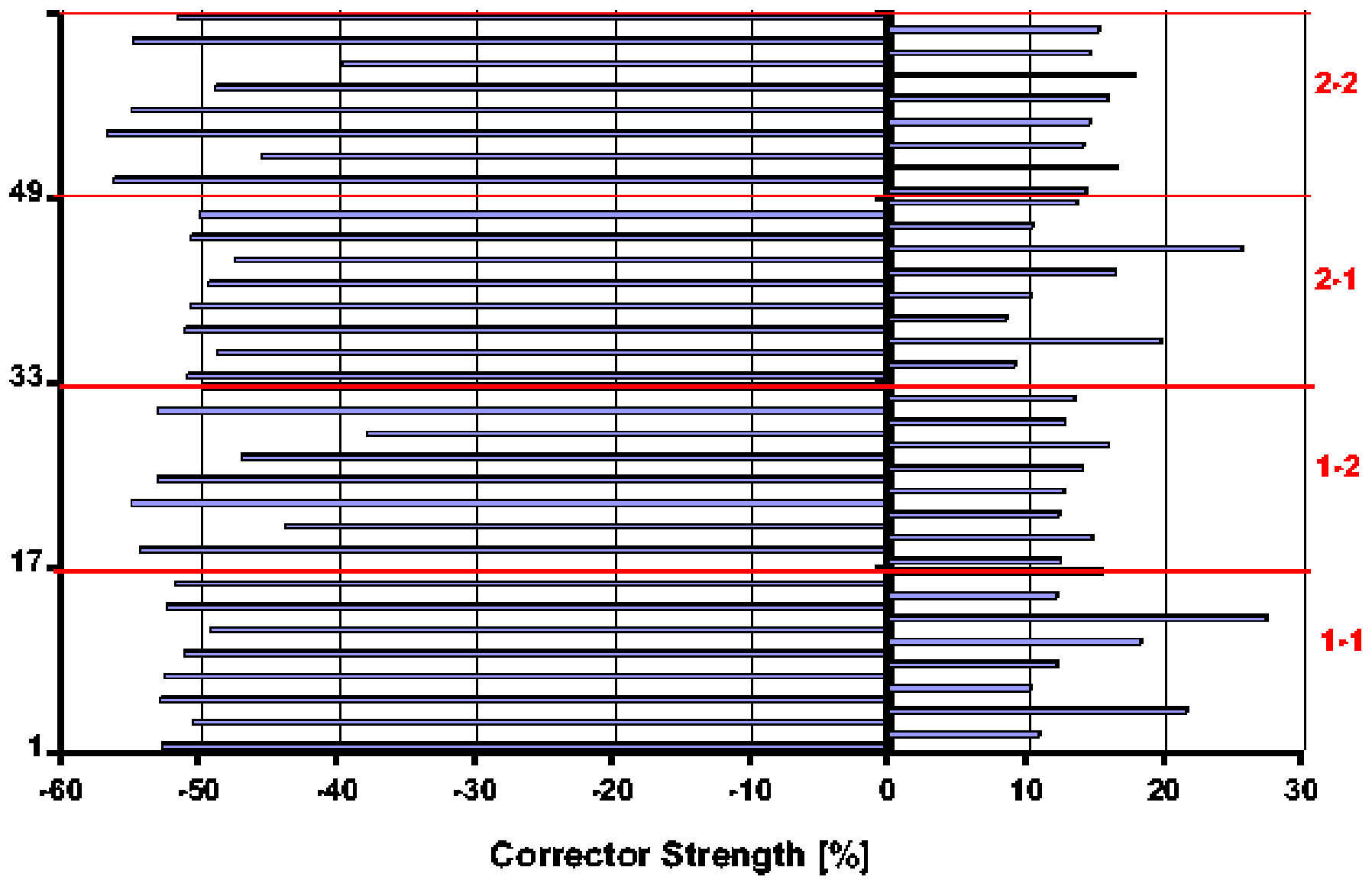
MEB 89



Collision IR8 a4 Correction

July 19, 2005

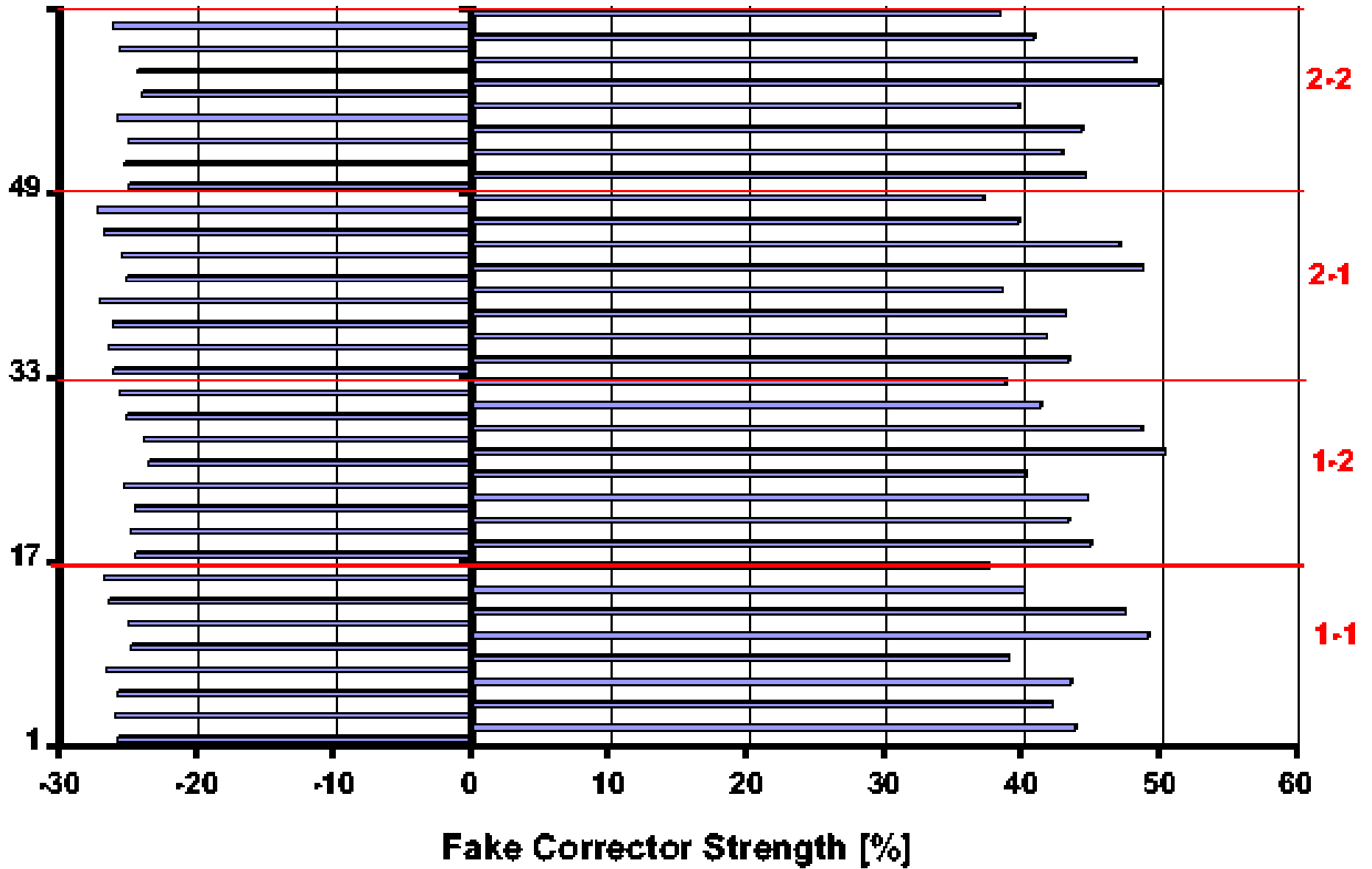
MEB 89



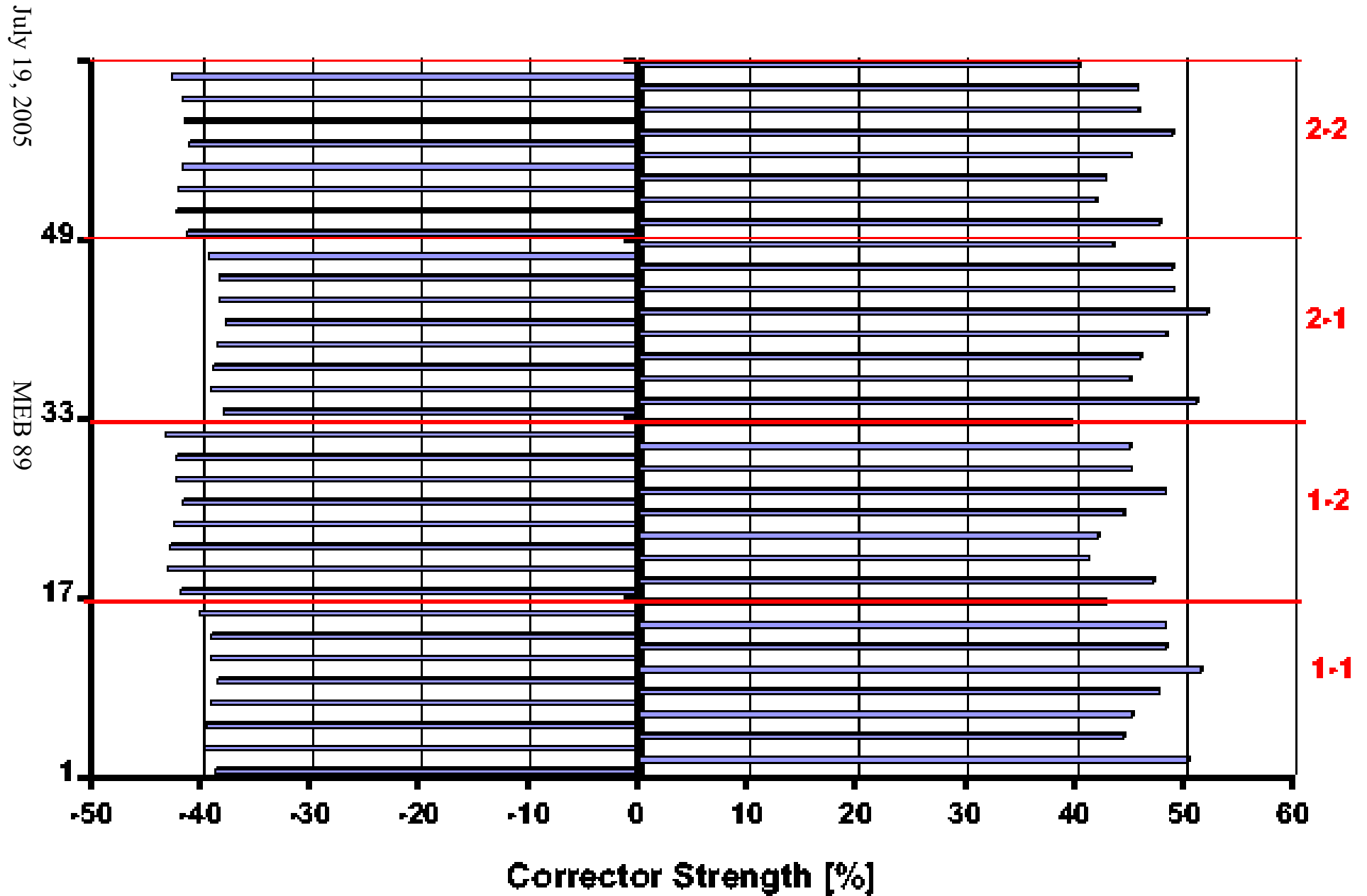
Injection IR8 b4 Correction

July 19, 2005

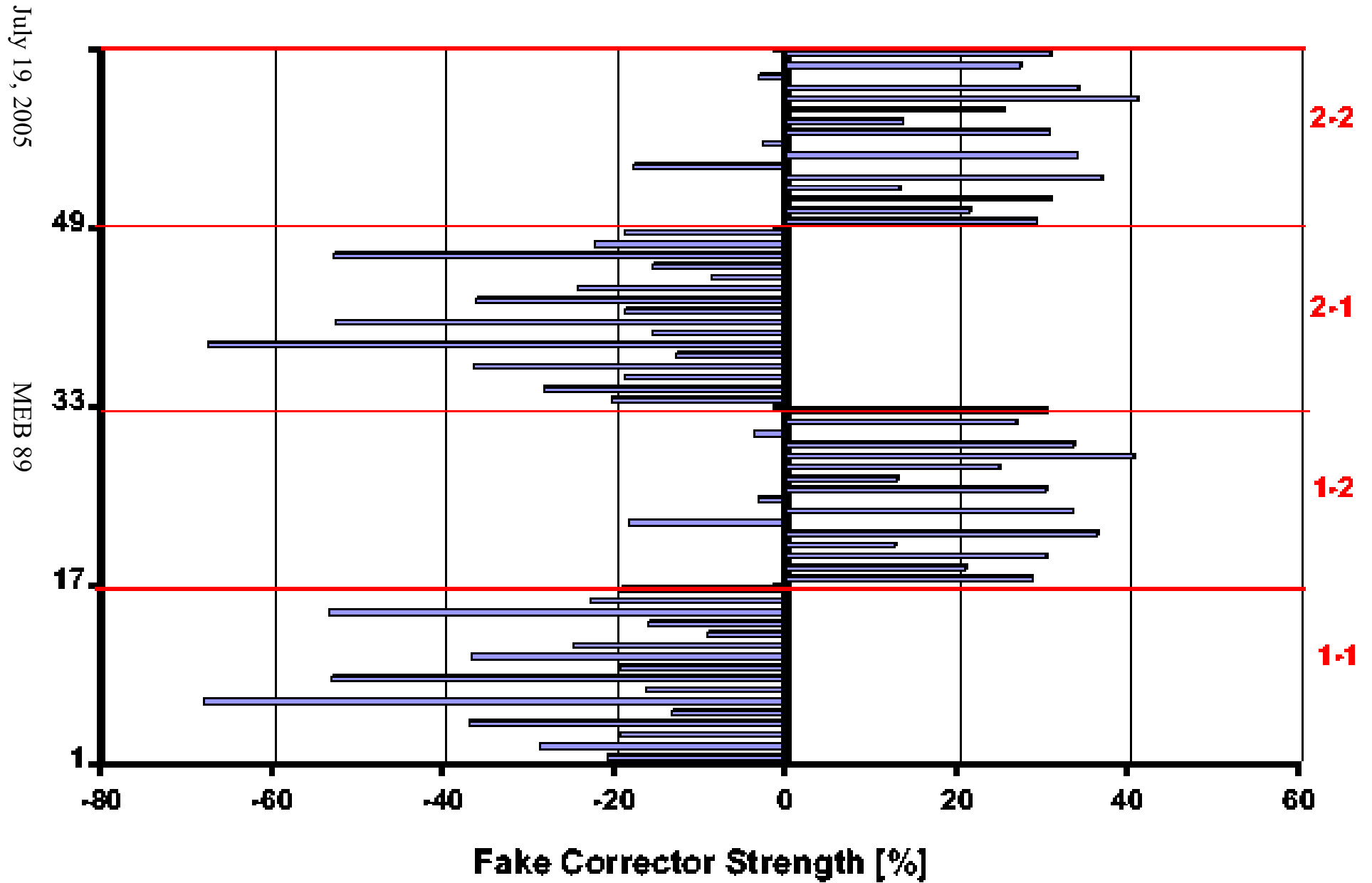
MEB 89



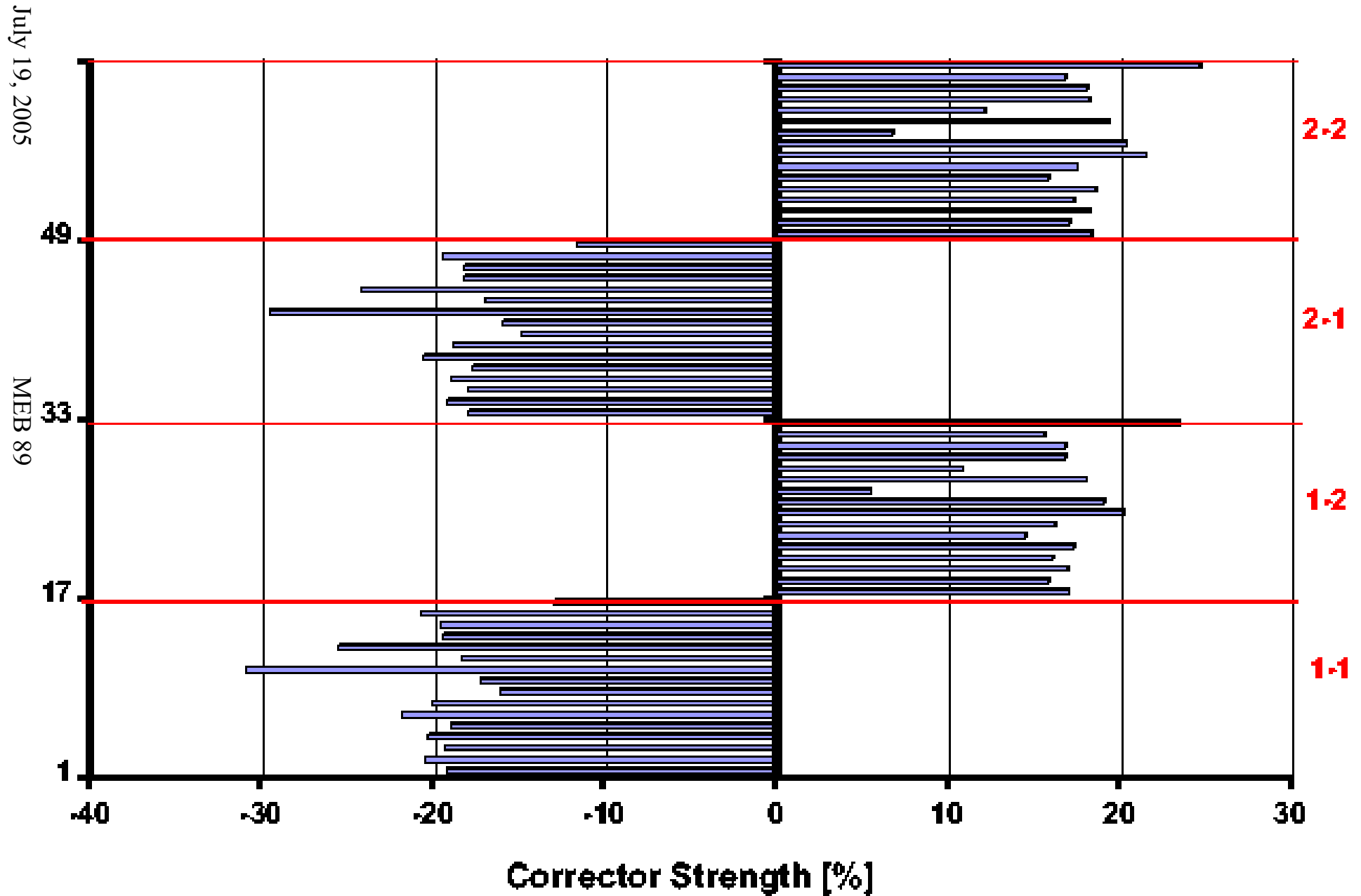
Collision IR8 b4 Correction



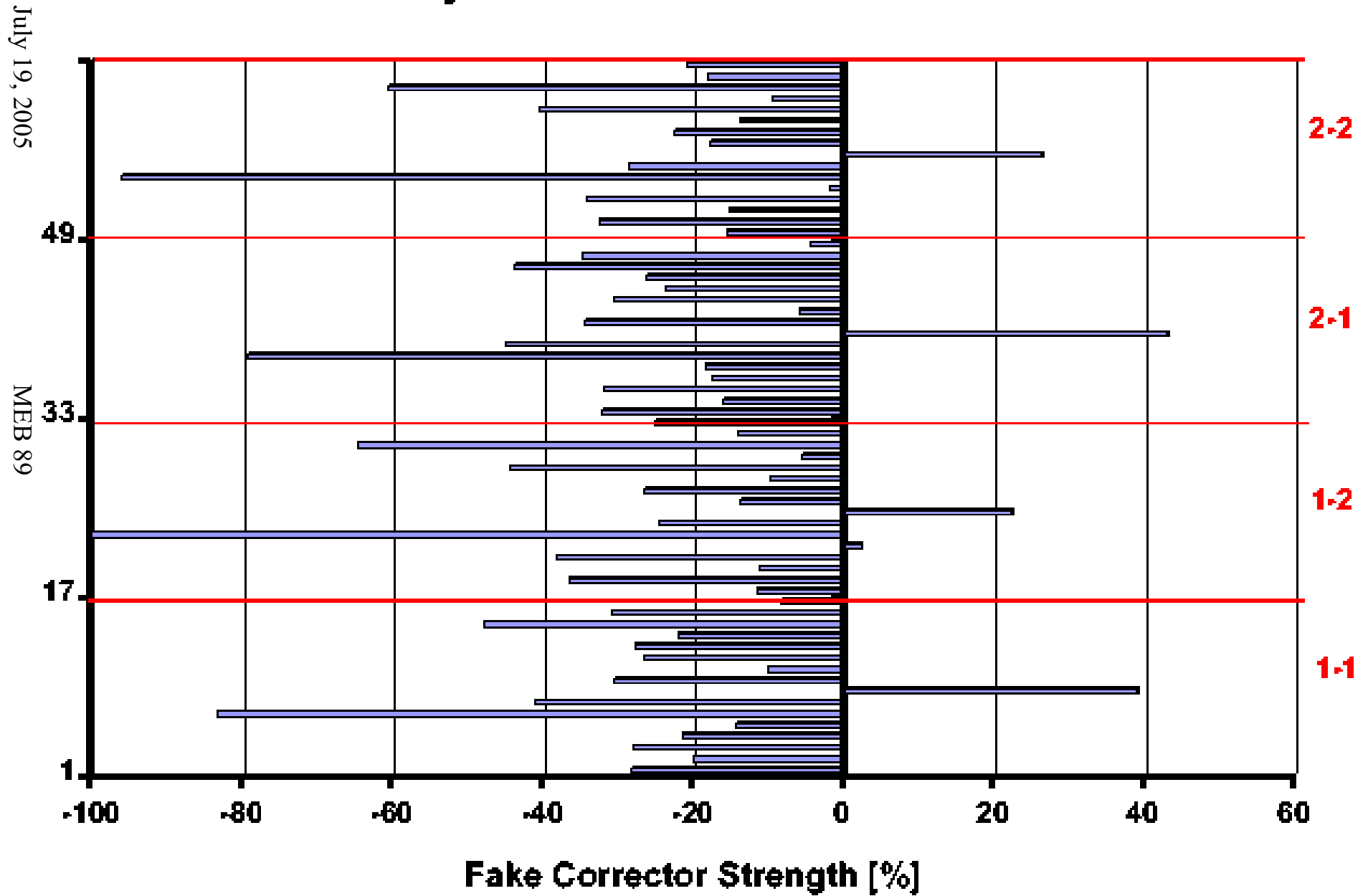
Injection IR8 a3 Correction



Collision IR8 a3 Correction



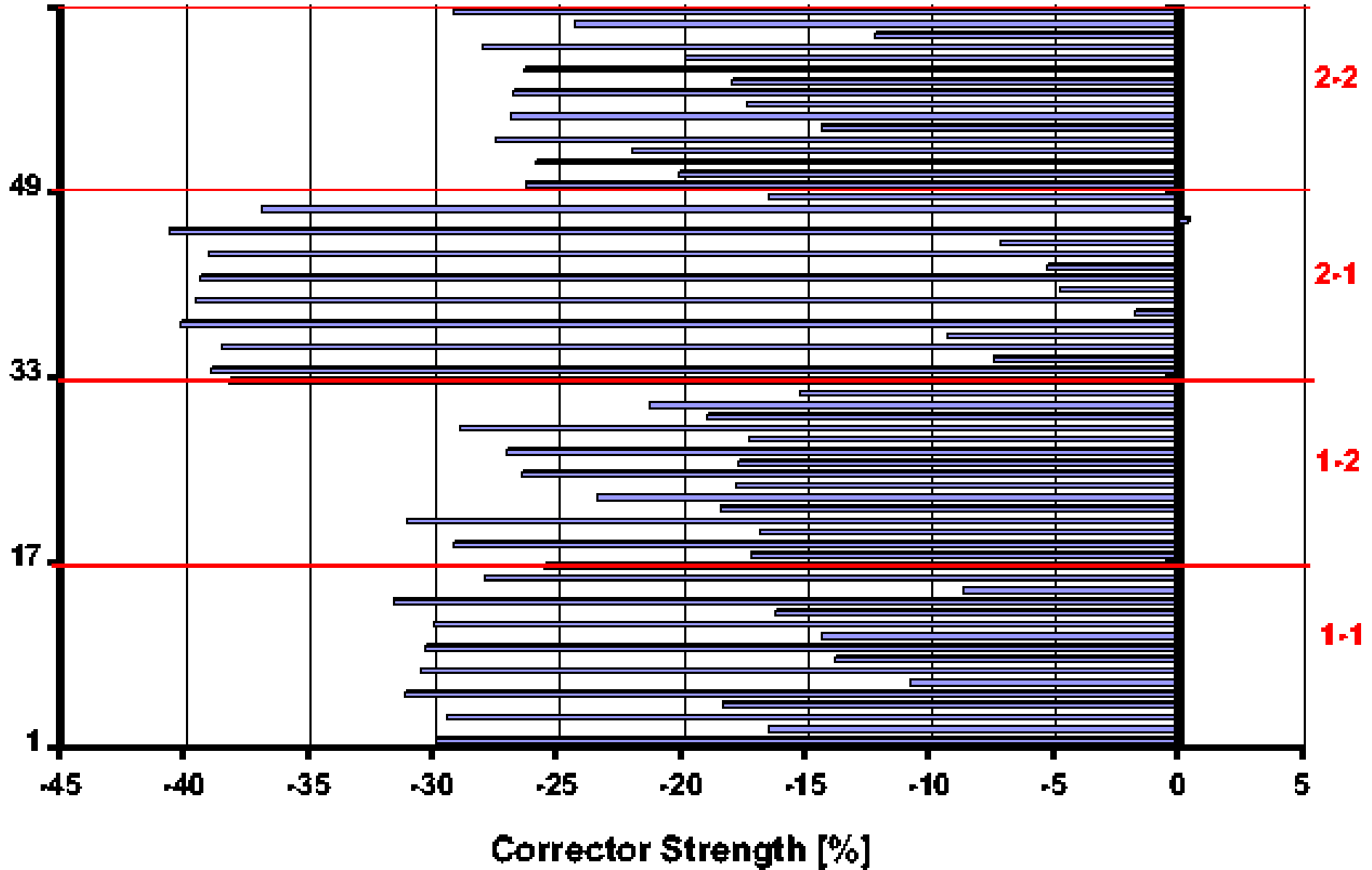
Injection IR8 b3 Correction



Collision IR8 b3 Correction

July 19, 2005

MEB 89



Techniques

- *Milestone: Measured errors of individual magnets can now be introduced in newest MAD-X sample job to overwrite error table (→ TR)*
- *Errors and sign convention checked for all quadrupoles in IP8 checked → perfect!*
- *Semi-automatic routine prepared to produce IDCard color coding*
- *Script prepared for running MAD-X for all Q1/2/3 permutations → optimize triplet correction*

Results

- *No dramatic preference found for sorting*
- *Slight advantage for:
LQXA01/LQXB04 left &
LQXA04/LQXB05 right*
- *Tools ready for quick sorting on arrival of new data*