

---

# Polarity Checks: Sector 23

+ ? -

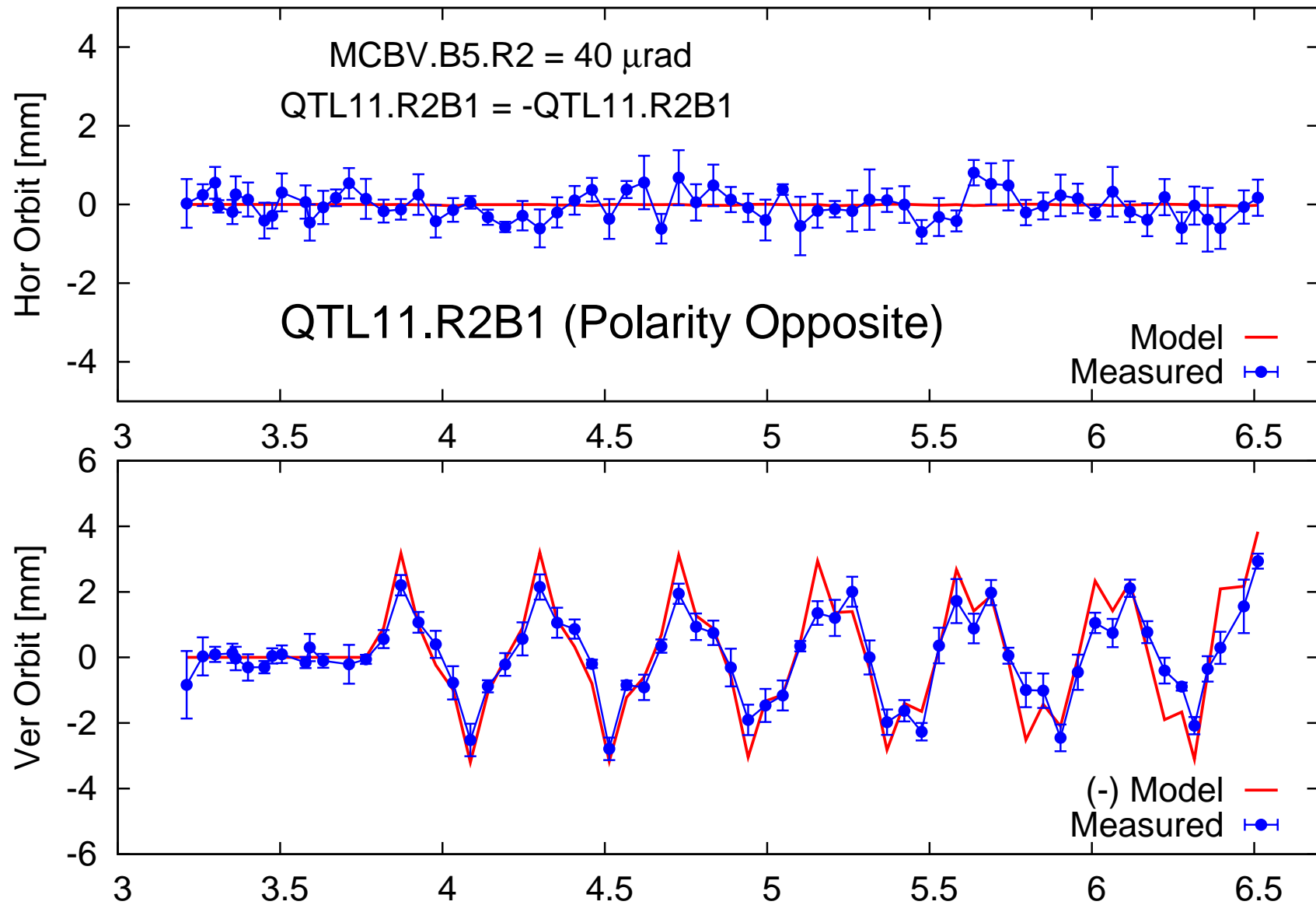
R. Calaga, Y. Sun, R. Tomás, F. Zimmermann, OP

BNL/LARP, CERN

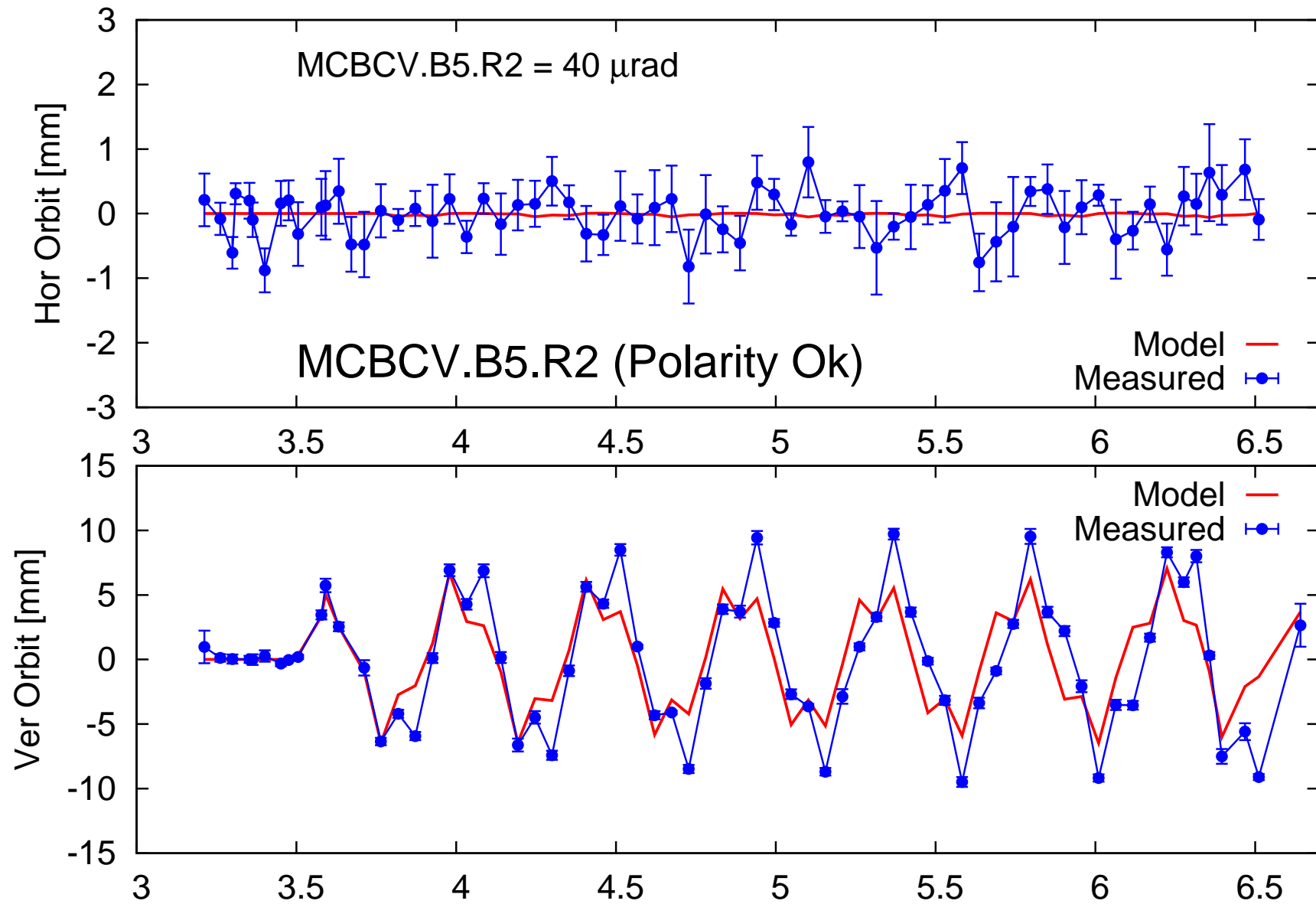
Sep 9, 2008

---

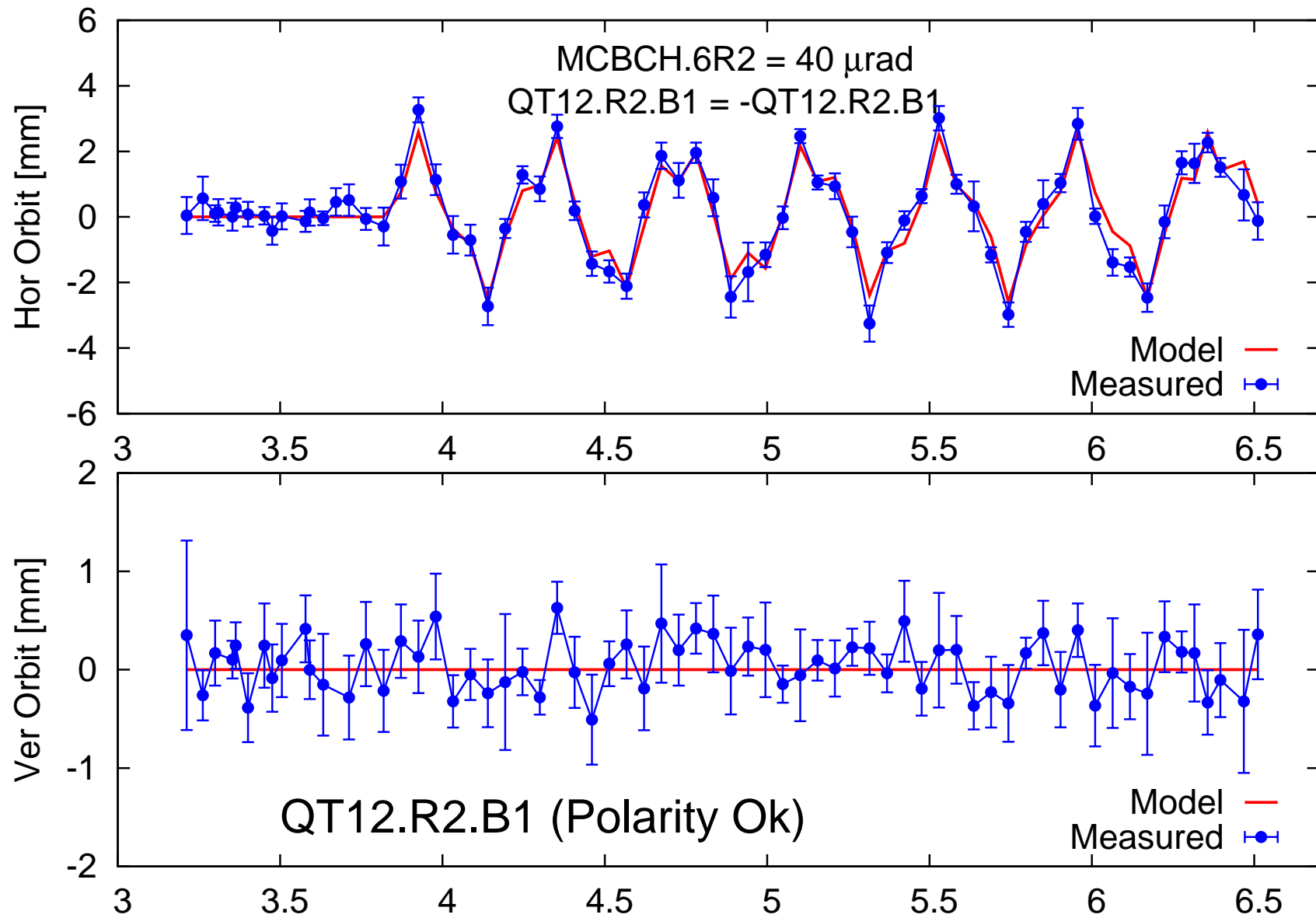
# QT11.R2.B1, Polarity Opposite



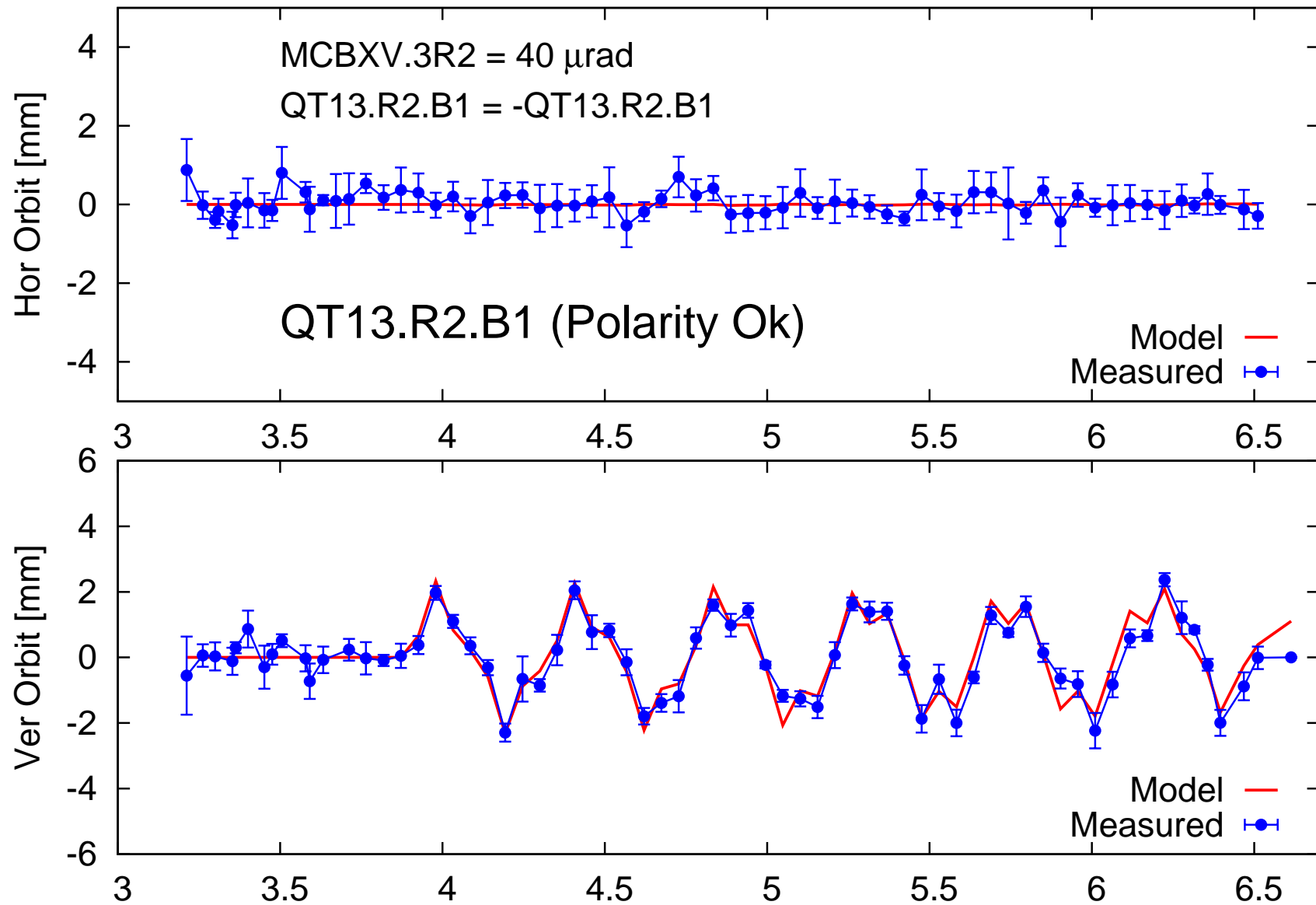
# MCBCV.B5.R2, Polarity Ok



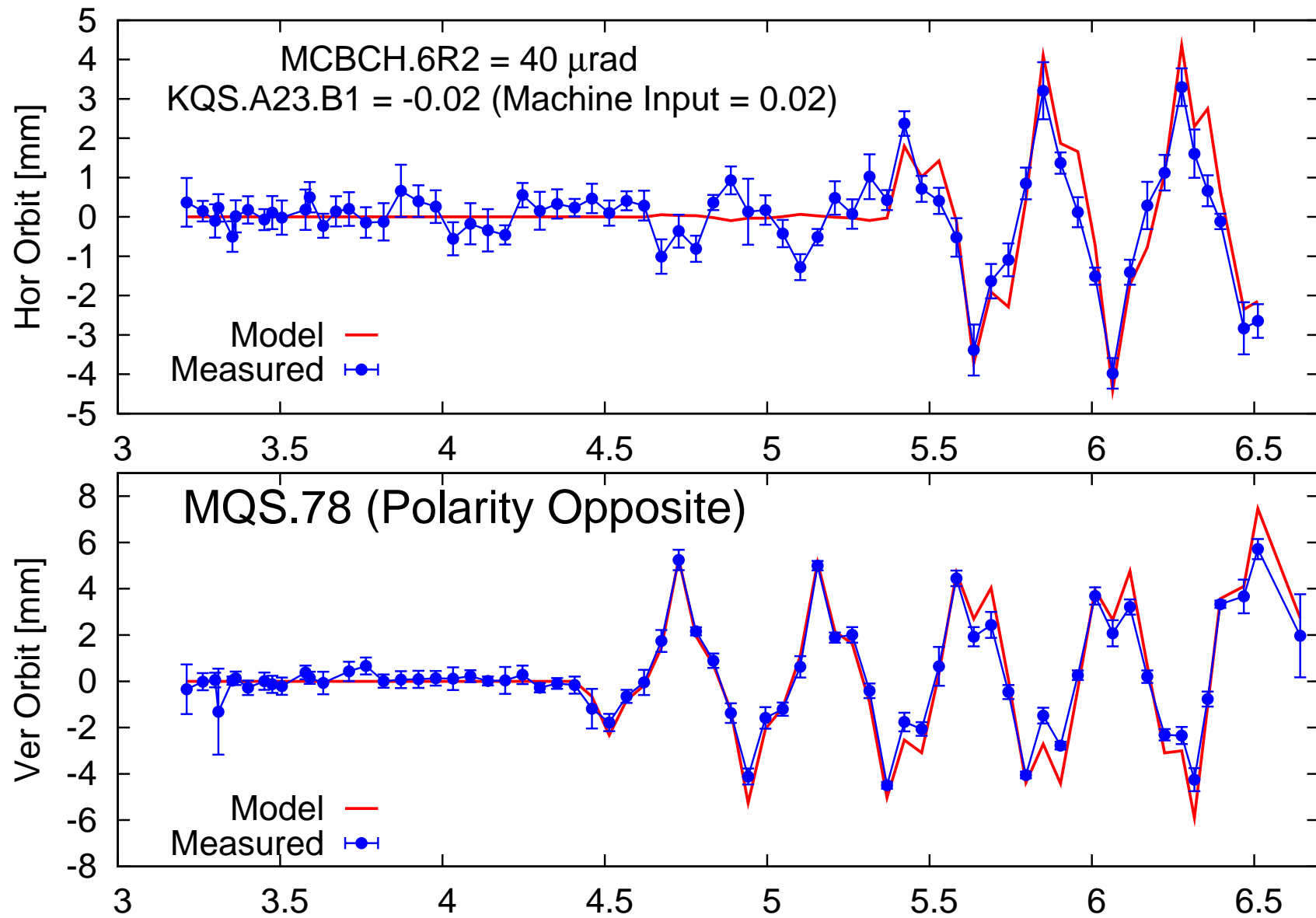
# QT12.R2.B1, Polarity Ok



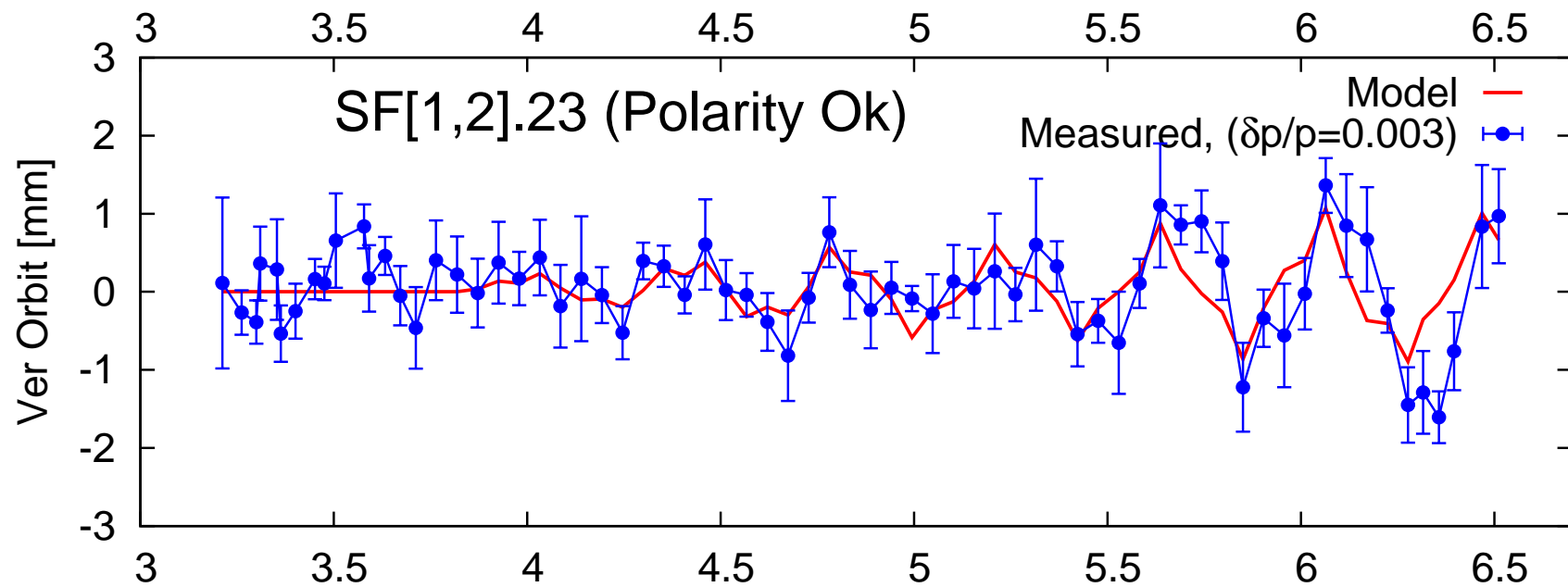
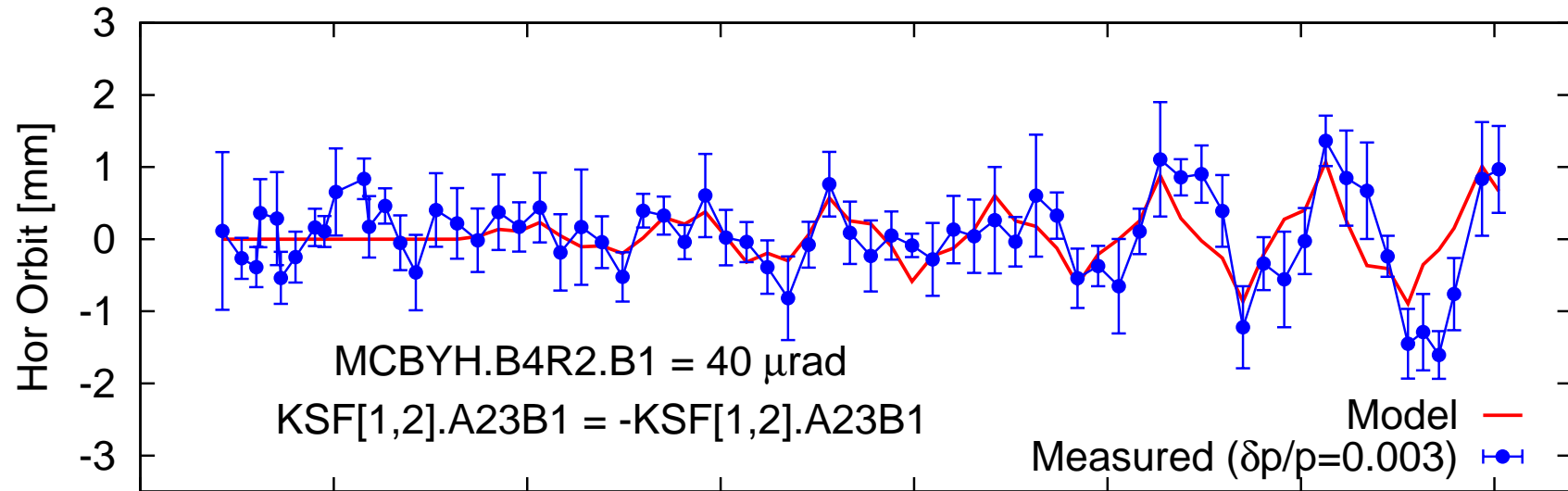
# QT13.R2.B1, Polarity Ok



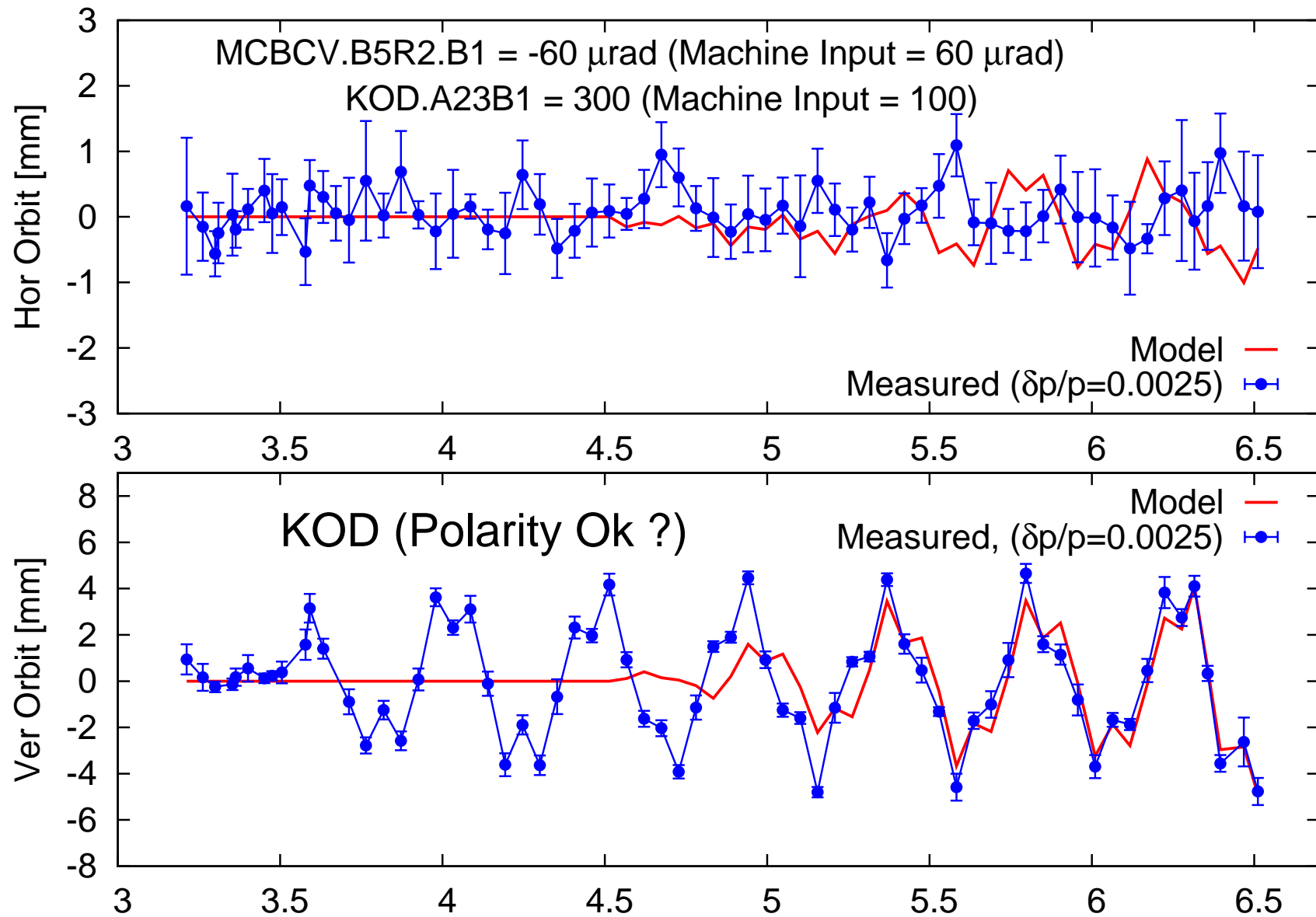
# MQS.23.B1, Polarity Opposite



# SF[1,2].A23, Polarity Ok



# KOD.A23.B1, Polarity Ok ?





# Conclusions

---

- Polarity problems:
  - Trim Quad: QT11.R2.B1
  - Skew Quad: MQS.A23.B1
  
- Unknown Problem:
  - KOD.A23.B1 (?)
  
- Polarities OK:
  - Trim Quads: QT12.R2.B1 & QT13.R2.B1
  - Focusing Sextupoles: SF[1,2].A23

---

# Polarity Checks: Sector 78

+ ? -

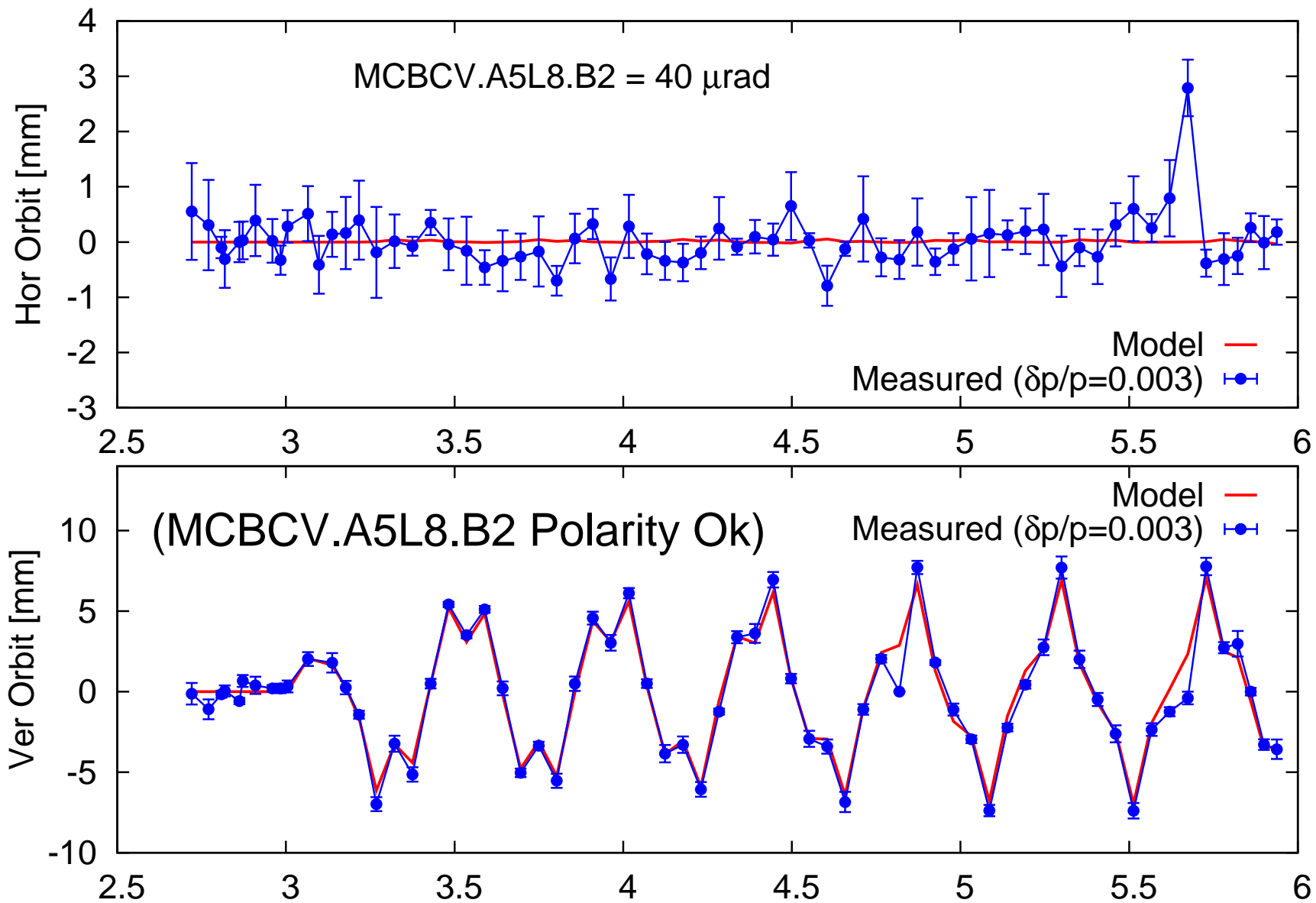
R. Calaga, Y. Sun, R. Tomás, F. Zimmermann, OP

BNL/LARP, CERN

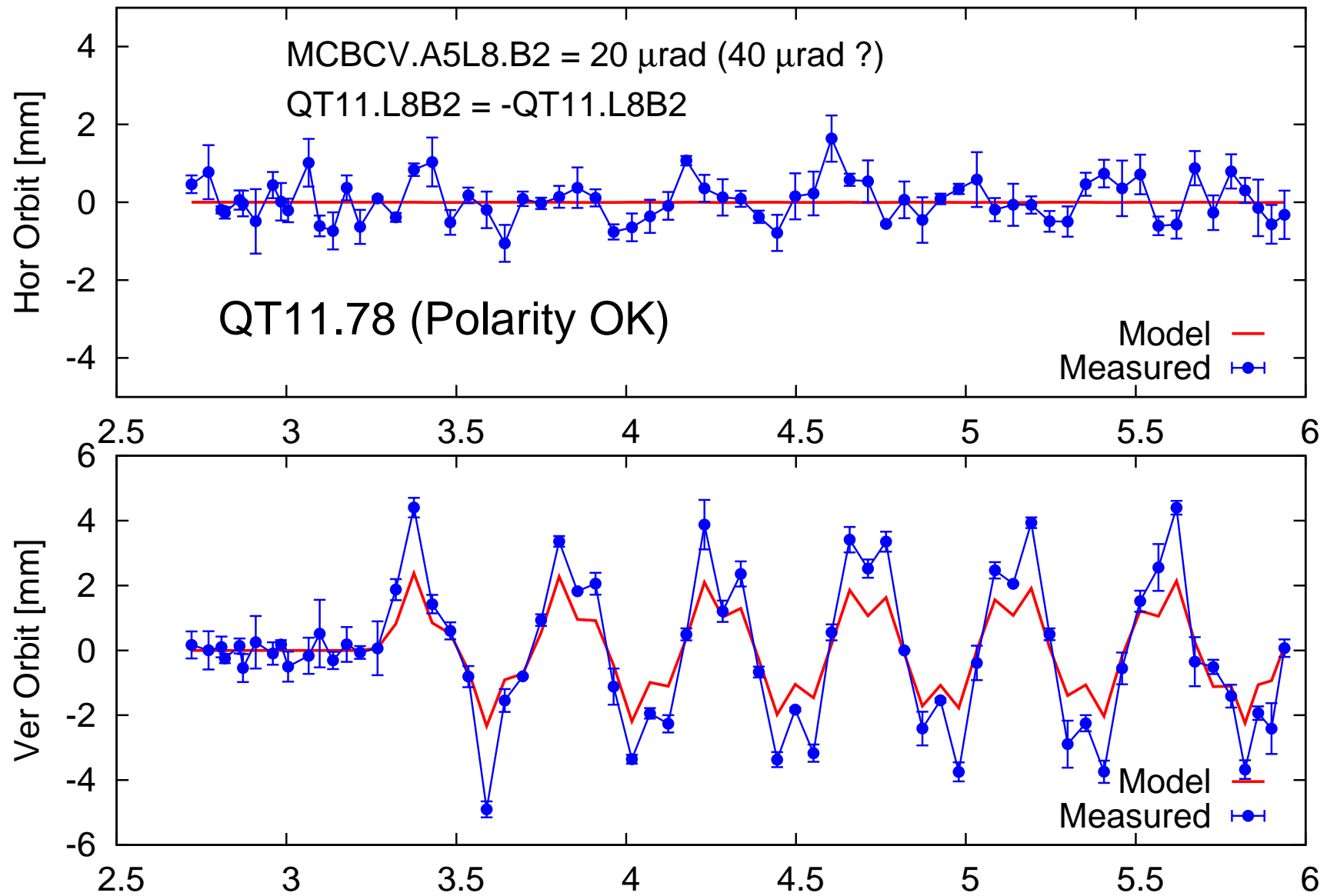
Sep 5, 2008

---

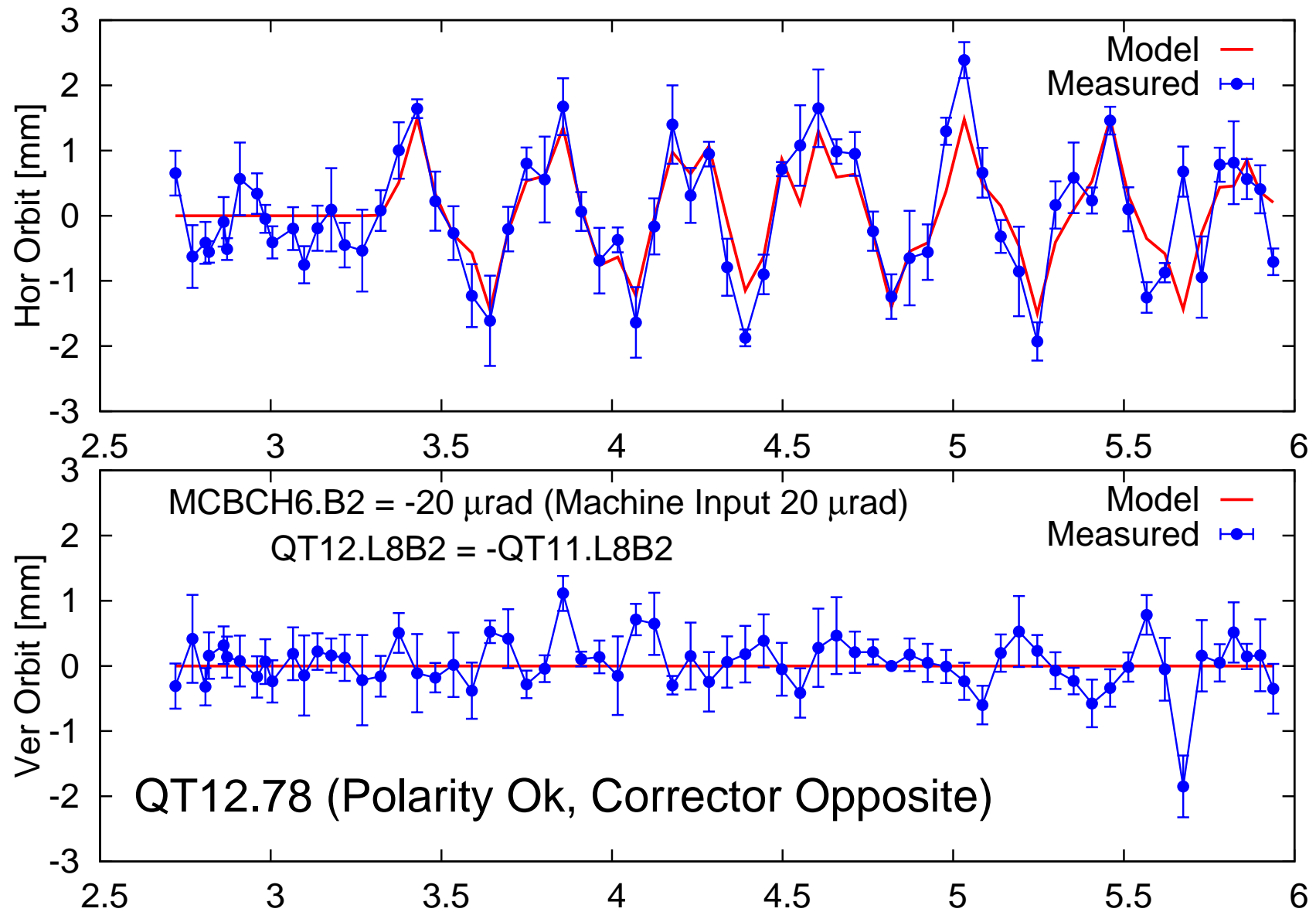
# MCBCV.A5L8.B2 (Polarity Ok)



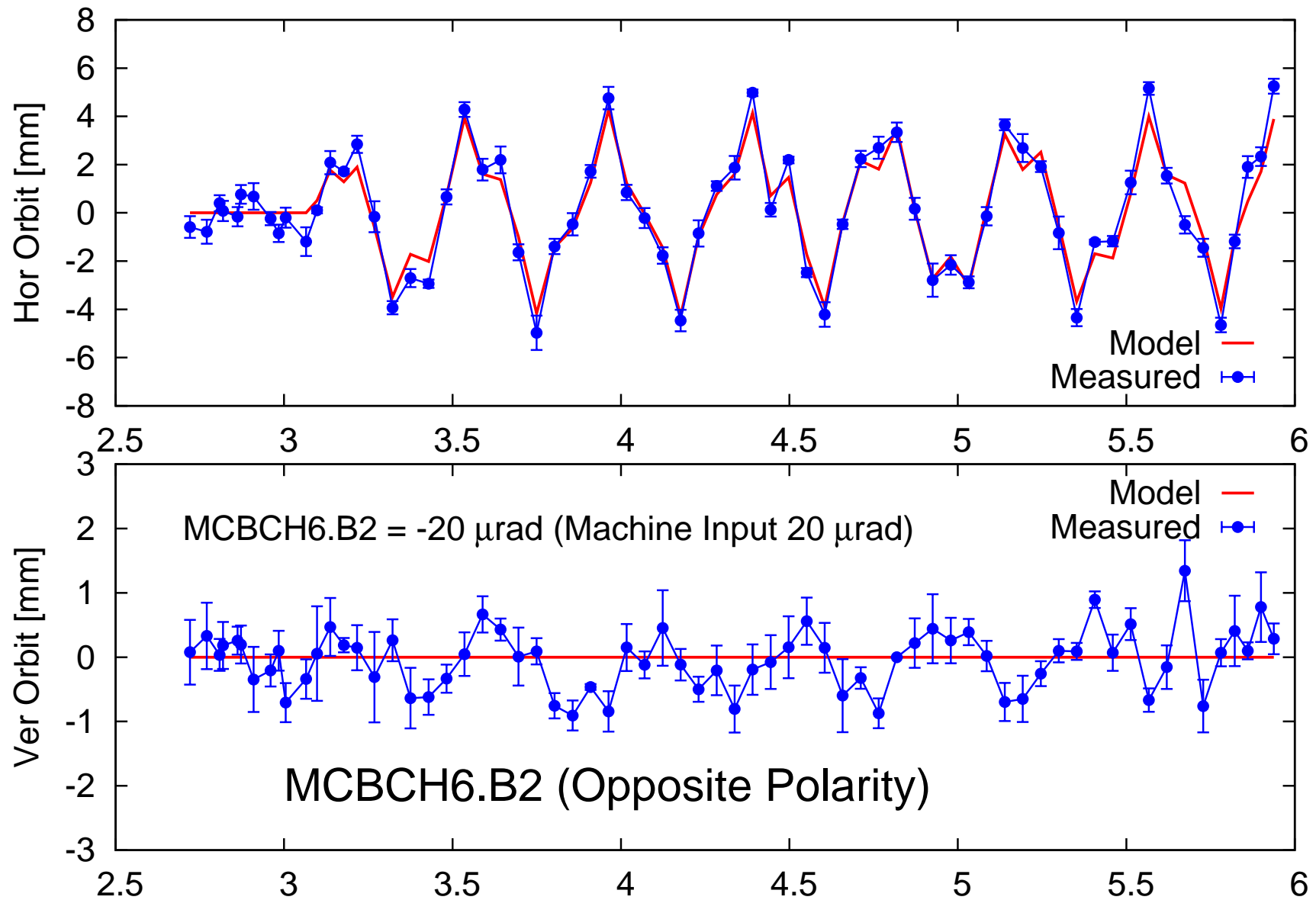
# QT11.78, Polarity OK



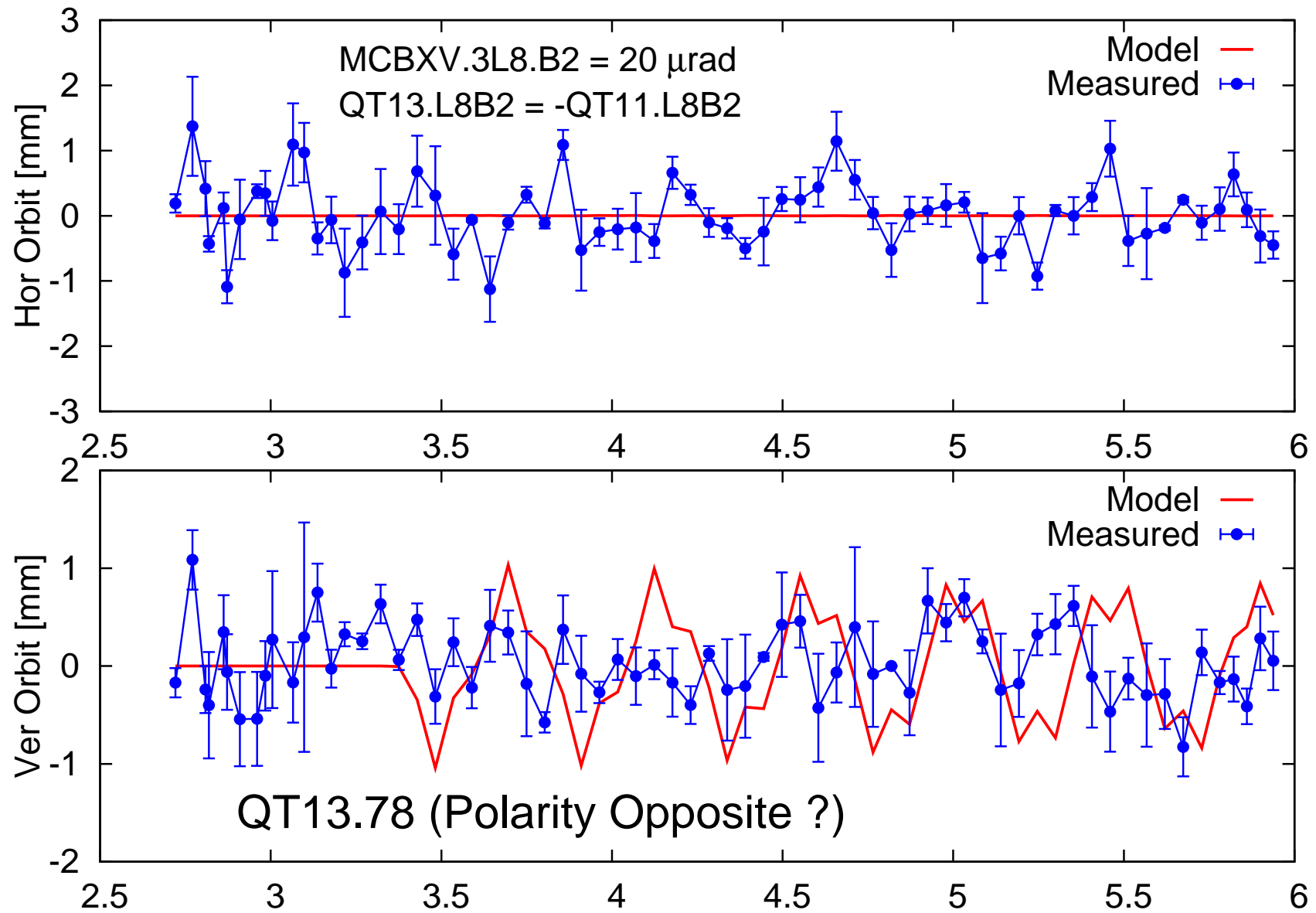
# QT12.78, Polarity Ok



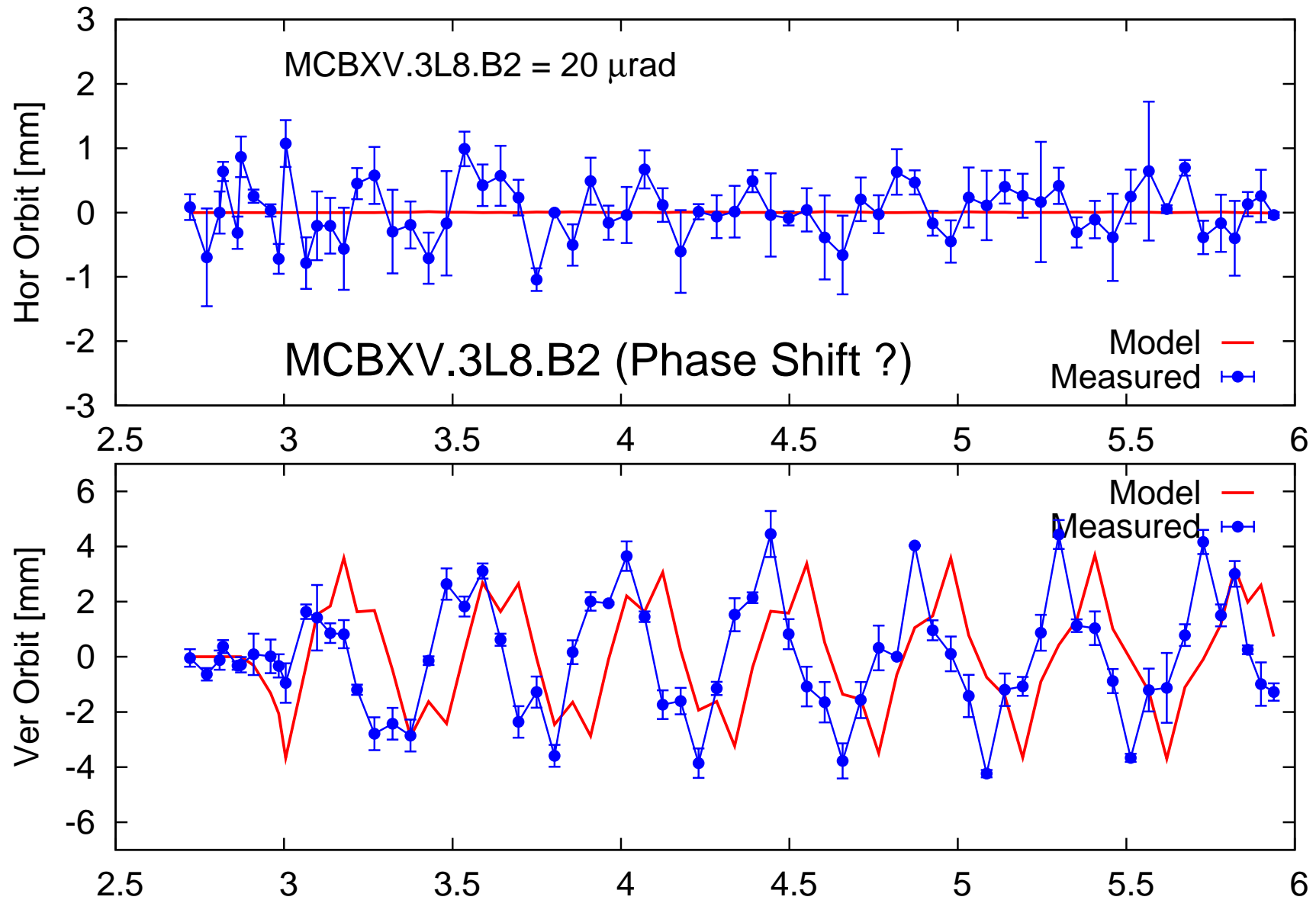
# MCBCH6.B2, Opposite Polarity



# QT13.78, Opposite -or- Corrector

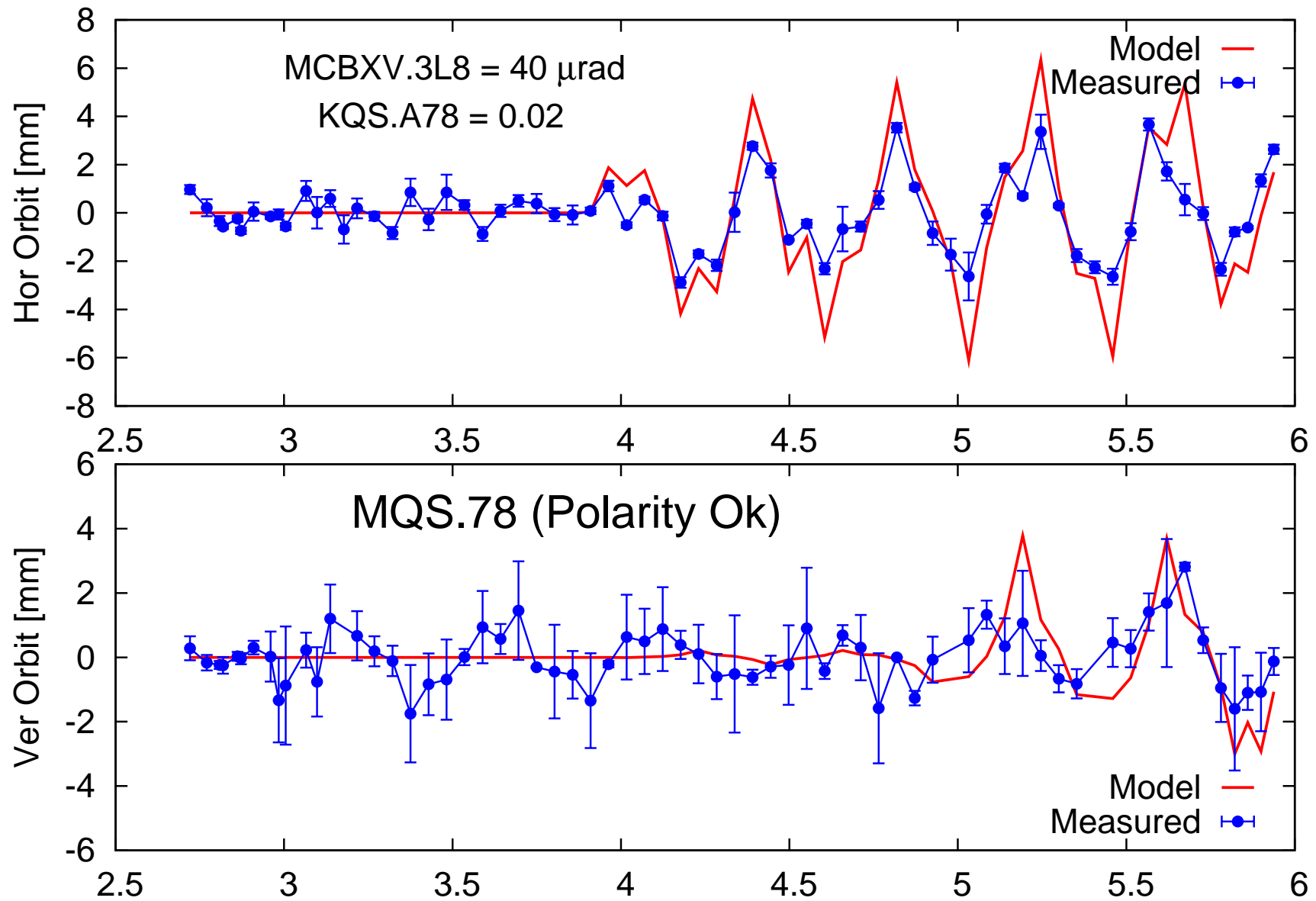


# MCBXV.3L8.B2 (Phase Shift ?)

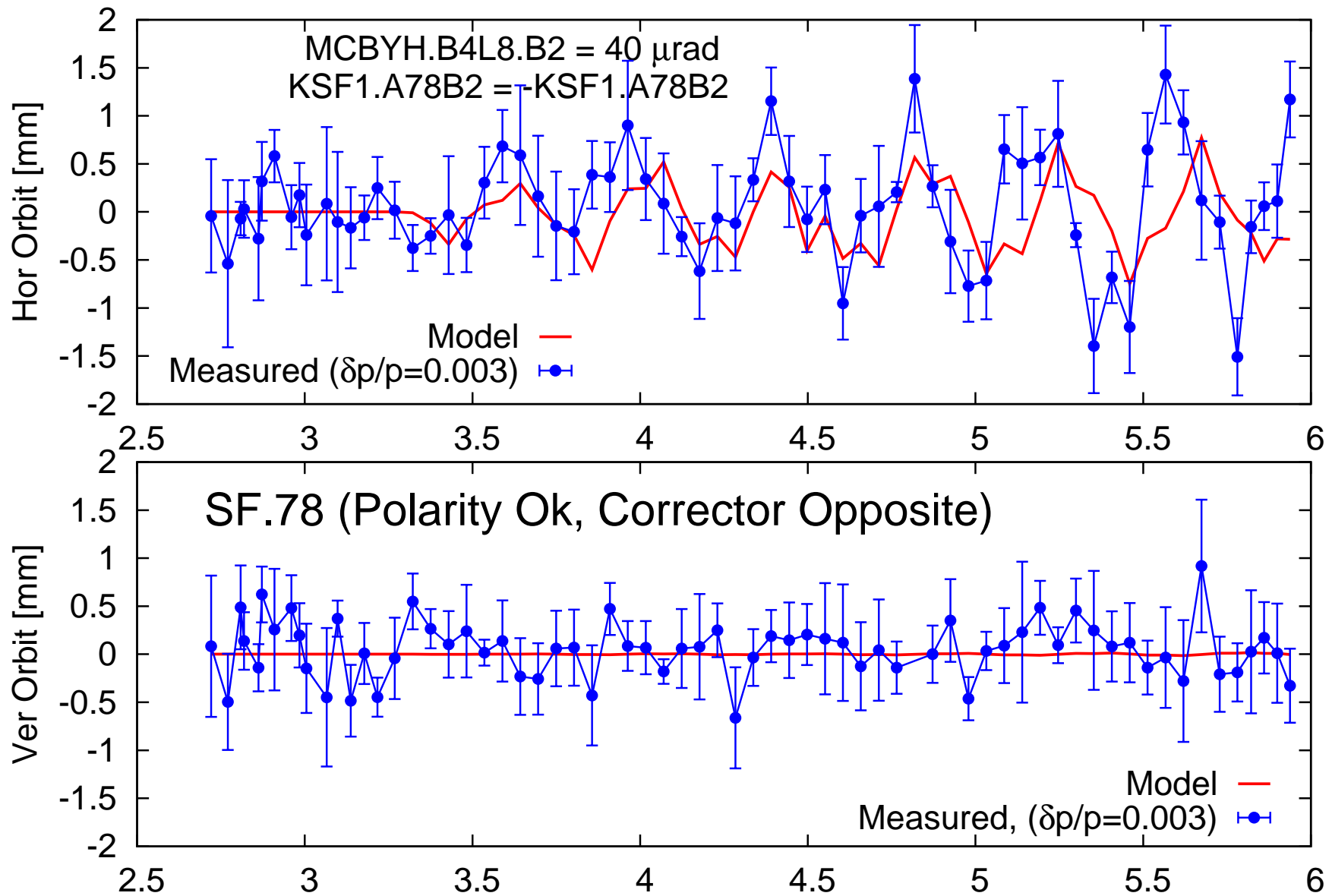




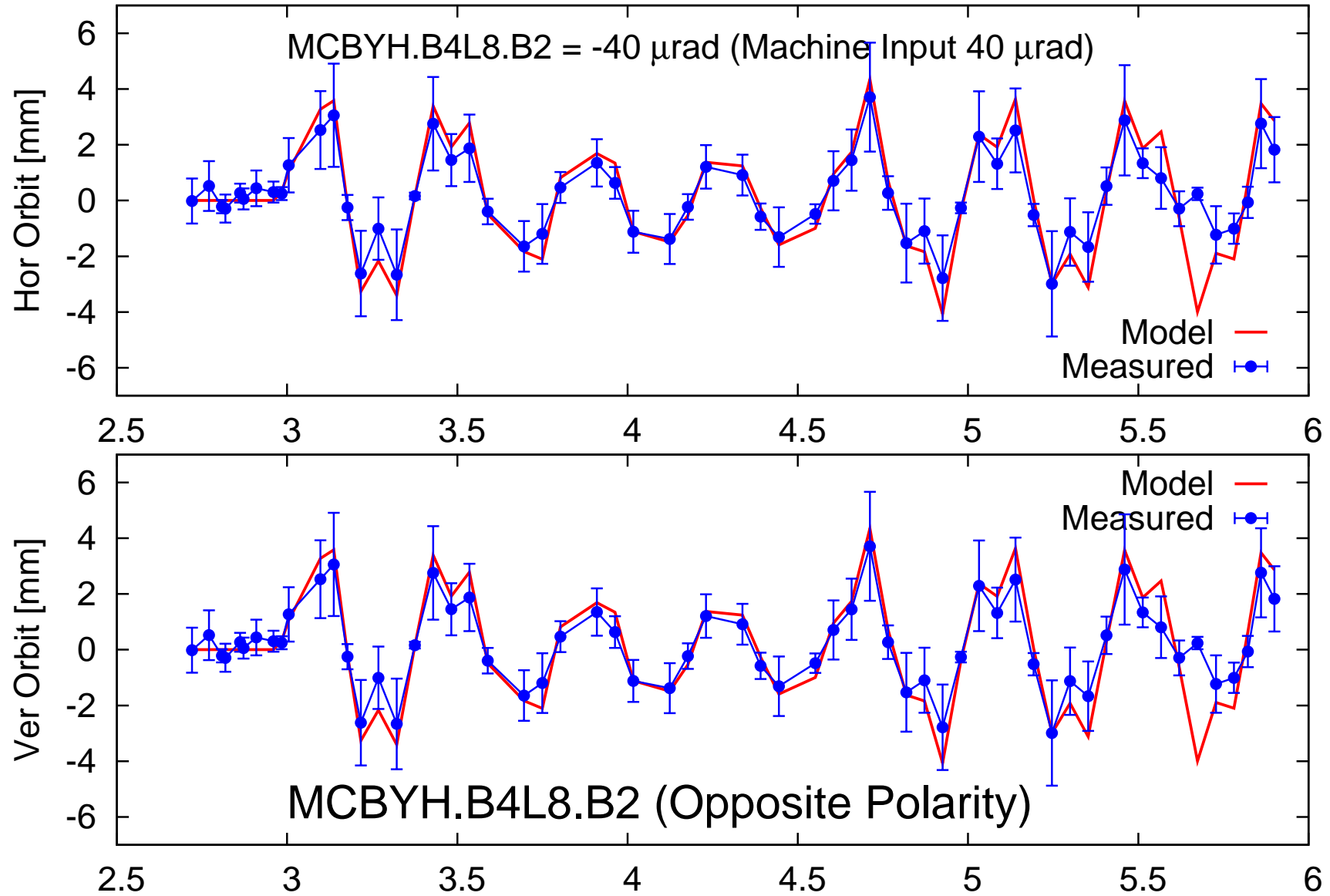
# MQS.78, Polarity Ok



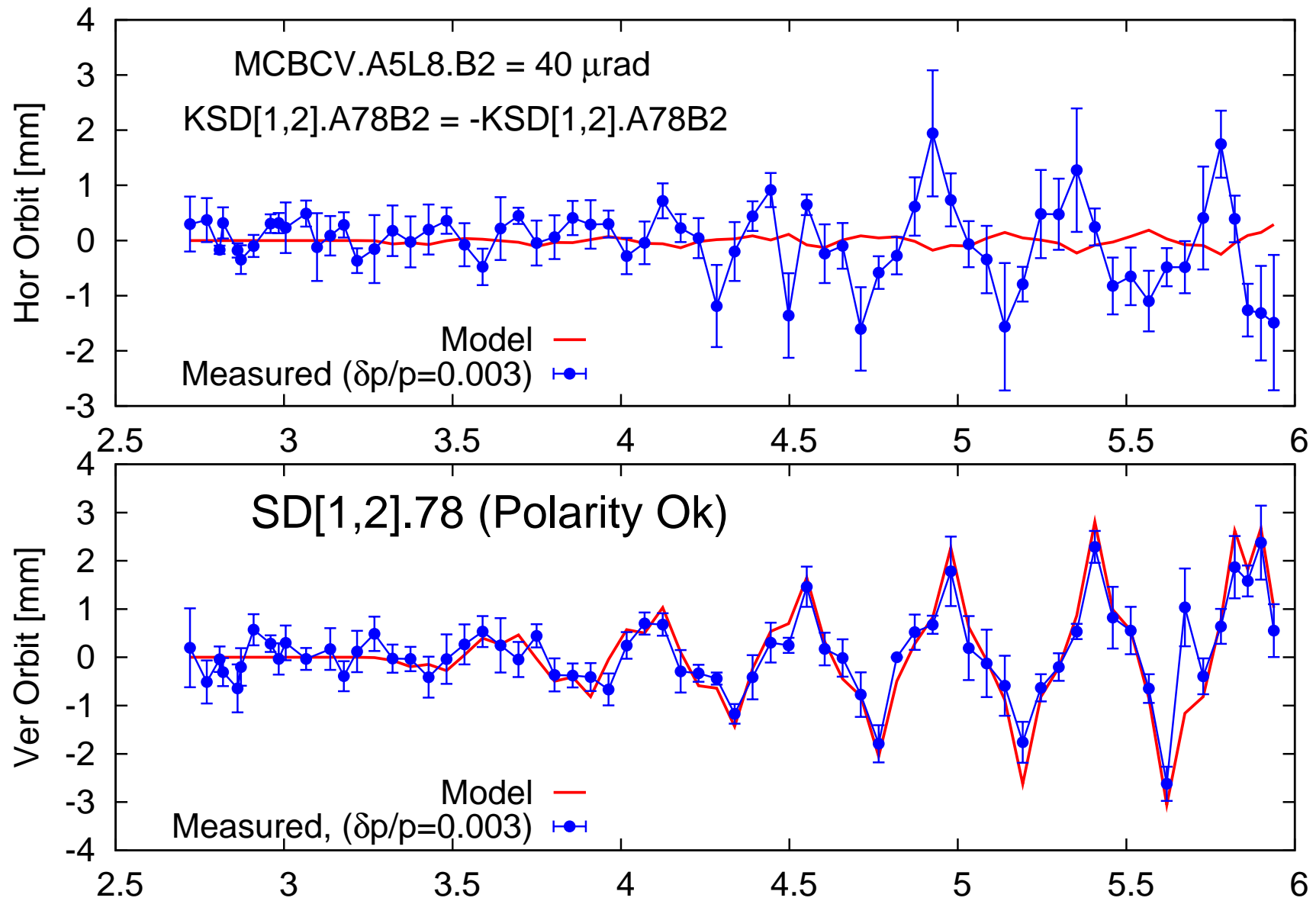
# SF1.A78, Opposite -or- Corrector



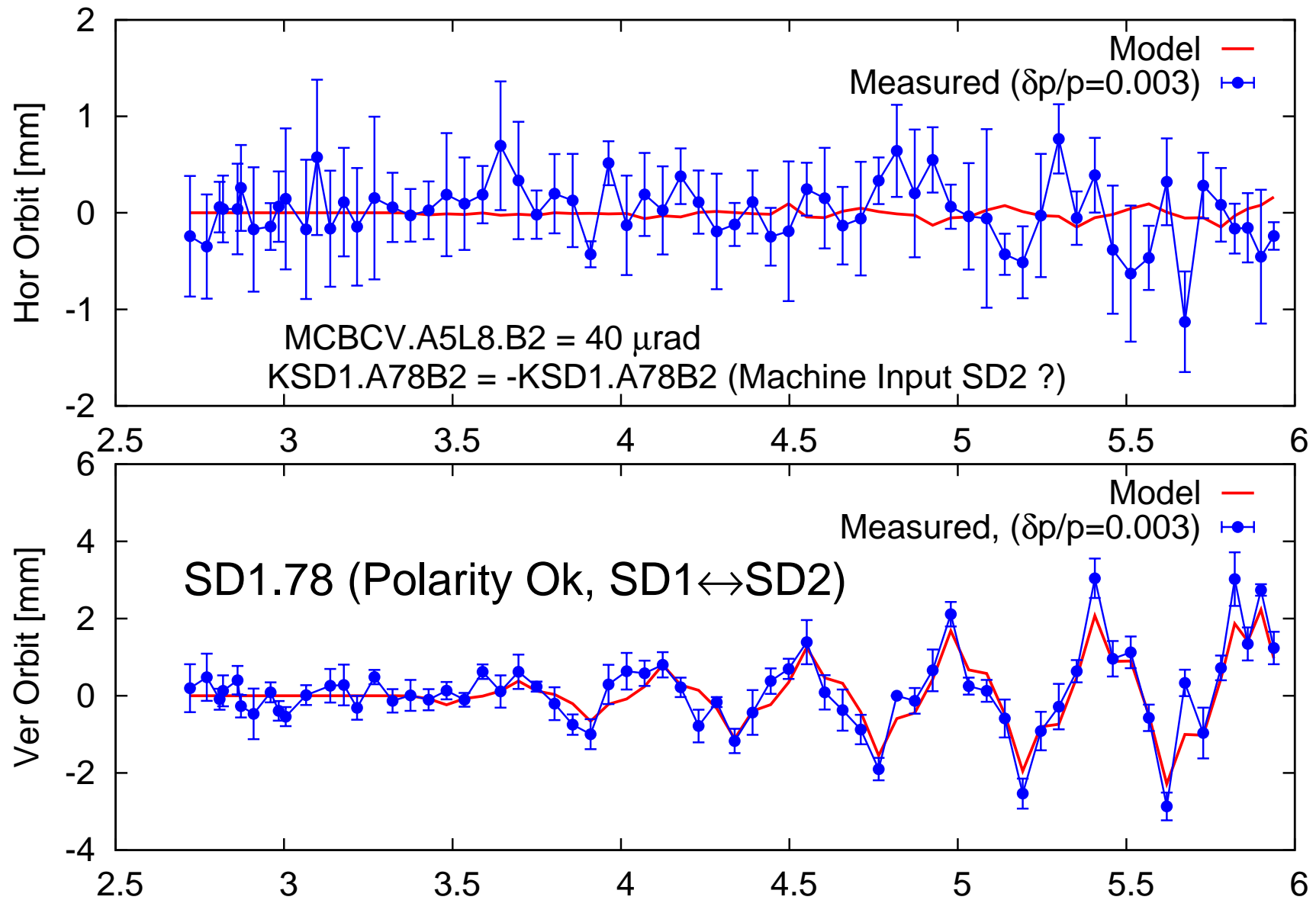
# MCBYH.B4L8.B2, Opposite Polarity



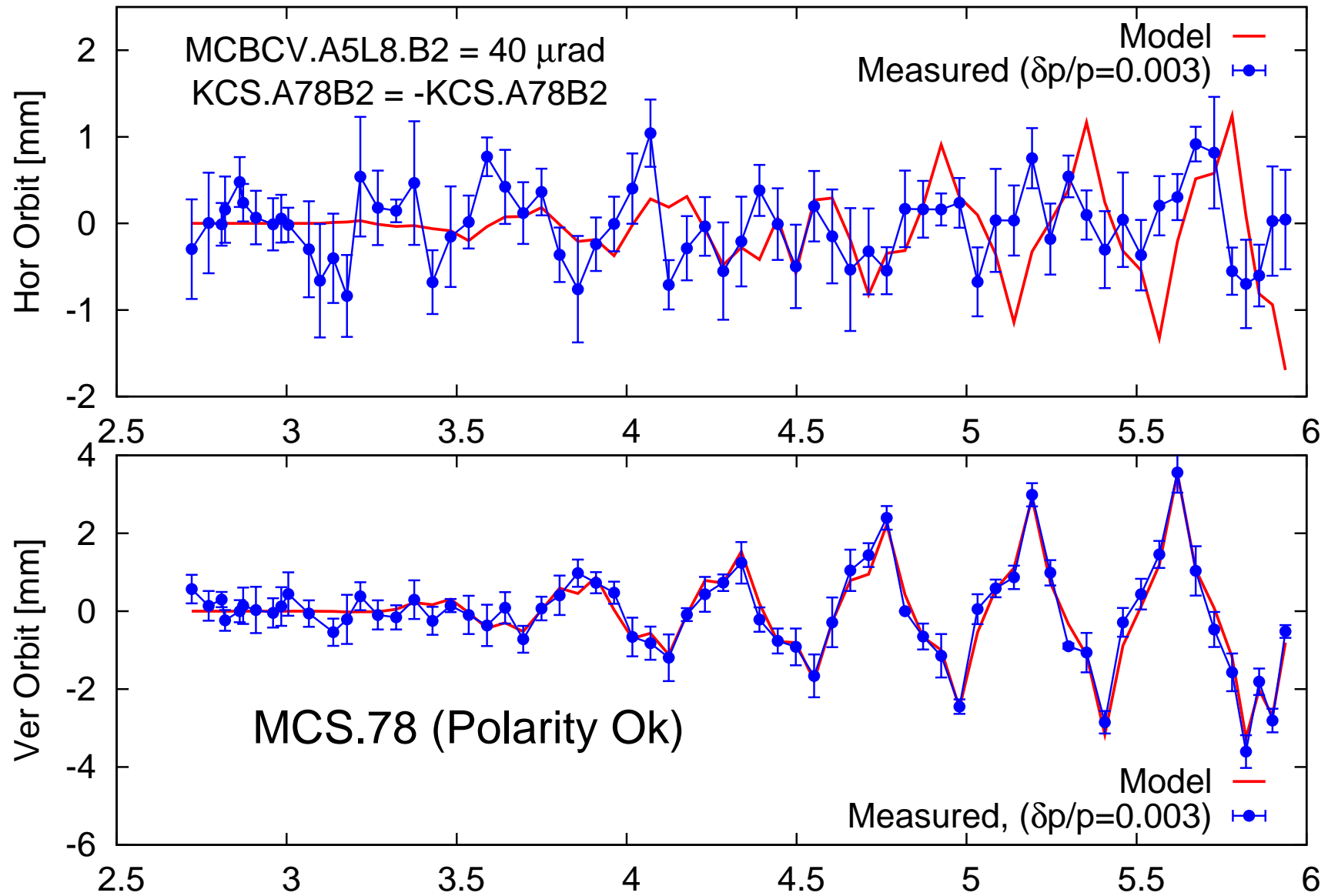
# SD1.A78 & SD2.A78, Polarity Ok



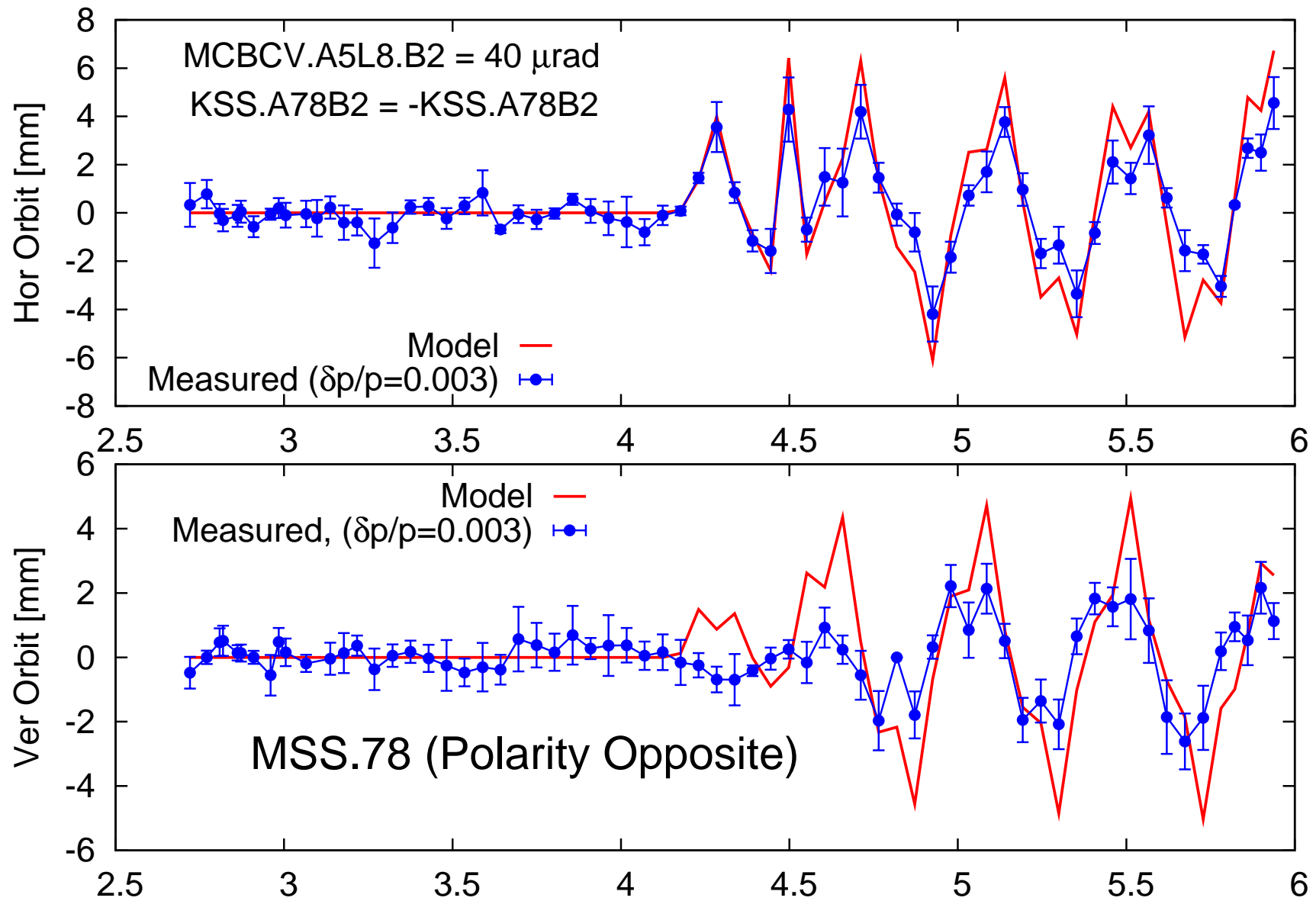
# SD1.A78, Polarity Ok



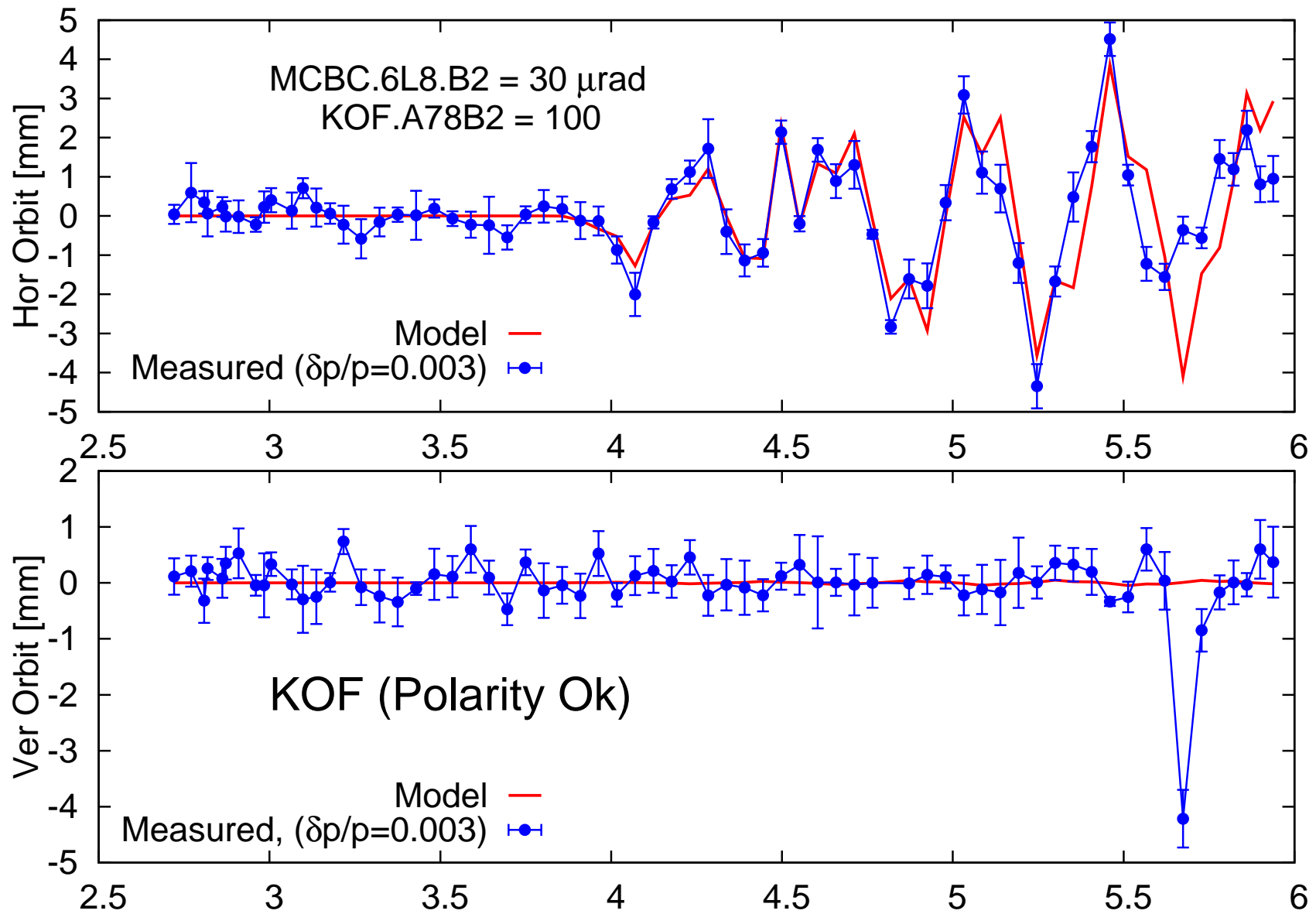
# RCS.A78, Polarity Ok



# RSS.A78, Opposite Polarity

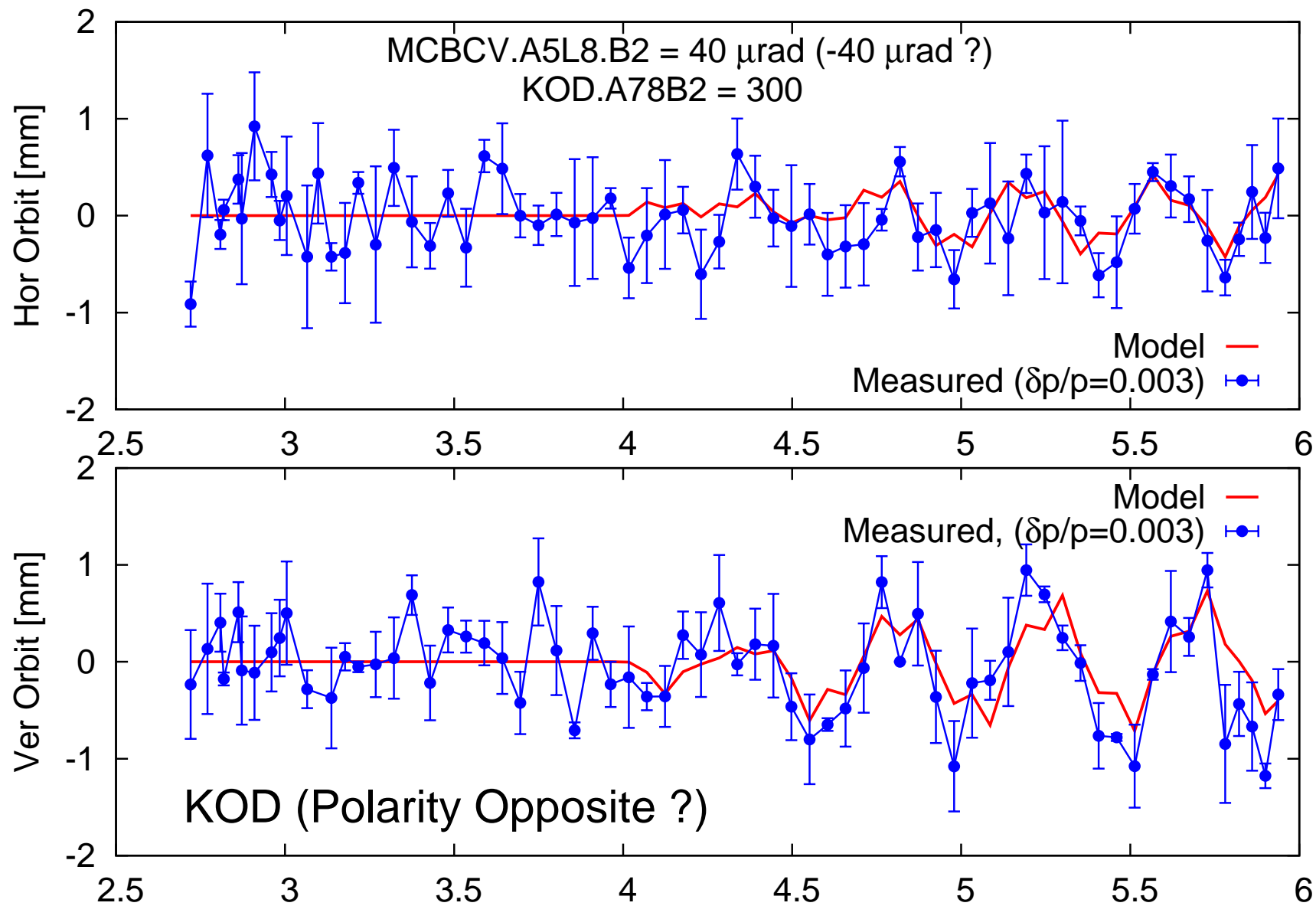


# KOF.A78, Polarity Ok





# KOD.A78, Opposite Polarity (?)



# Conclusions

---

## - Polarity problems:

- Trim Quad: QT13.78 (?)
- Skew Sextupoles: RSS.A78
- Corrector H: MCBYH.B4L8.B2
- Corrector H: MCBCH6.B2

## - Unknown Problem:

- Corrector V: MCBXV.3L8.B2
- SD1.78  $\leftrightarrow$  SD2.78 (?)
- Octupoles: KOD.A78 (?)

## - Polarities OK:

- Trim & Skew Quads: QT11.78, QT12.78 & MQS.78
- Sextupoles: SF1.A78 (?), SD[1,2].A78
- B<sub>3</sub> Spool Pieces: RCS.A78
- Octupoles: KOF.A78