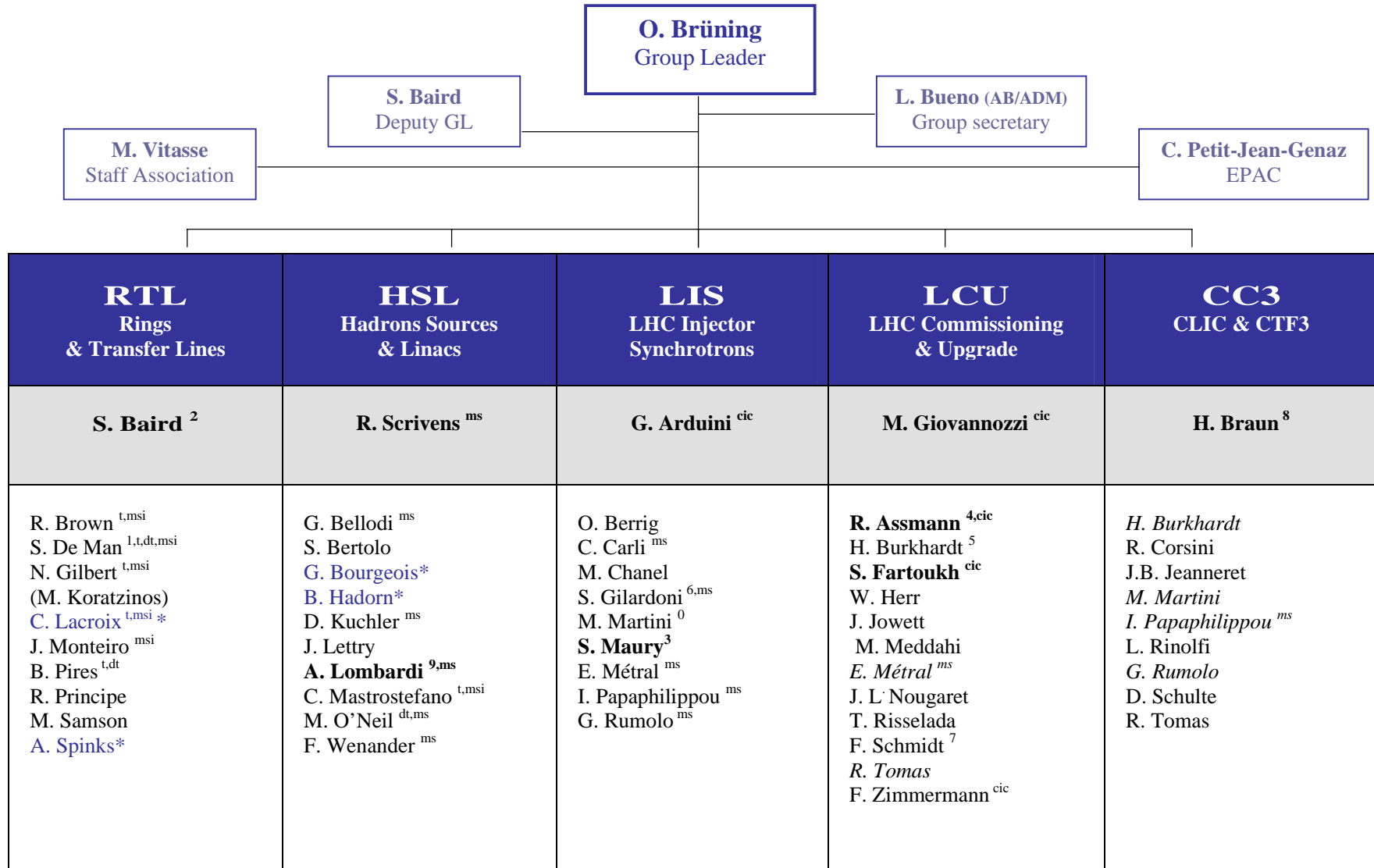


# Accelerators and Beam Physics Group Structure

April 2008



MS: Machine supervisors    CIC: Commissioner in charge  
 (0): AB Training Officer  
 \* PRP  
 MSI: Machine superintendents    t : TSO;    dt : Deputy TSO

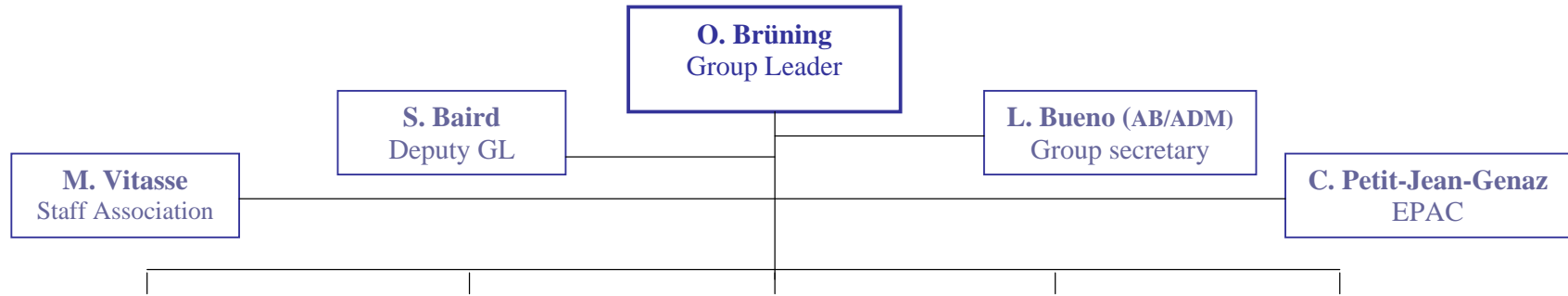
(1): detached to TS/IC  
 (2): Consolidation Project Leader  
 (3): I-LHC Project Leader

(4): Collimation Project Leader  
 (5): Computer Administration  
 (6): MTE Beam Commissioning Coordinator

(7): MADX Custodian  
 (8): CTF3 Dep. P. Leader; CLIC Design  
 (9): LINAC4 dep. Project Leader

# Accelerators and Beams Physics Students, Fellows and External Members

April 2008



RTL Rings & Transfer Lines	HSL Hadrons Sources & Linacs	LIS LHC Injector Synchrotrons	LCU LHC Commissioning & Upgrade	CC3 CLIC & CTF3
<b>S. Baird</b>	<b>R. Scrivens</b>	<b>G. Arduini</b>	<b>M. Giovannozzi</b>	<b>H. Braun</b>
	S. Kondrashev J.B Lallement S. Lanzone E. Sargsyan M. Sayed Eshraqui	S. Aumon J. Barranco E. Benedetto T. Edgecock A. Franchi M. Juchno F. Meot D. Montillot D. Quattraro B. Salvant B. Spataro	I. Agapov C. Bracco R. Bruce R. Calaga R. De Maria U. Dorda E. Forest D. Kalchev P. A. Letnes A. Morita T. Pieloni V. Previtali F. Roncarolo Y. Sun G. Vanbavinckhove T. Weiler S. White	E. Adli F. Antoniou S. Bettoni A. Ferrari M. Korostelev A. Latina A. Ryazanov H. Shaker

Technical Student

Doctoral Student

Fellow

Marie Curie Fellow

Paid Associate

Unpaid Associate